

ENER-J® Smart Home Living



Model No: DDV-202 | SKU: SHA5307

Installation Guide

Please read it carefully before using the product, and keep this handy.

Packing List

After opening the package, please make sure the doorbell (hereinafter referred to as the "Equipment") is in good condition. Make sure parts below is included.

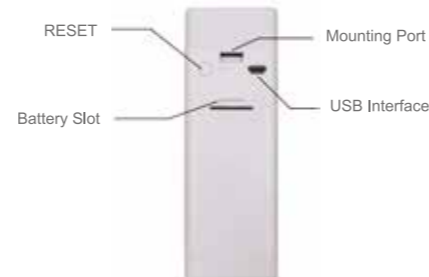


Appearance Introduction



1

IR LED	: The ambient light is not enough, this can increase picture brightness.
Light Sensor	: Used to collect environmental light status, when ambient light drops down to 2 Lux, the IR LED will turn on automatically.
MIC	: Audio Capture
Button	: Doorbell button
PIR	: When object movement detected in front of the device, the device will send notification to your phone automatically.
Lens	: Video image capture.
Indicator Light	: Blink BLUE light: Configuration status; RED light ON: Failed to connect to Wi-Fi; BLUE light ON: Connect to phone automatically; RED and BLUE flash: Connect to Wi-Fi automatically.



2

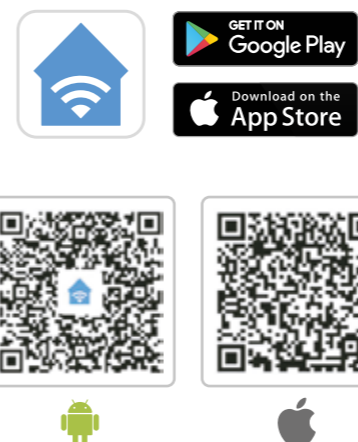
RESET Button	: To reset the device, long press this button for 5 seconds.
Battery Slot	: Support 2 x 18650 battery
USB Interface	: Micro USB port charging
Mounting Port	: Use this port to mount the camera to bracket

Setup the Device

Thank you for choosing our products! Please follow below instruction to setup and use your doorbell device.

1. Downloading and installing the APP

Open App Store (for iOS) or Google Play Store (for Android) on your device, search for "ENERJSMART" or scan QR code as following to download the right App for your device.

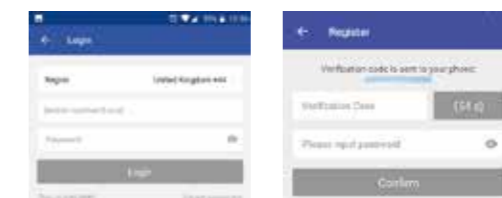


3

2. Setting up the APP

Before you begin:
▶ Make sure the ENERJSMART app is installed to your device.
▶ Make sure that your device is connected to a 2.4GHz Wi-Fi network, 5GHz is NOT compatible.

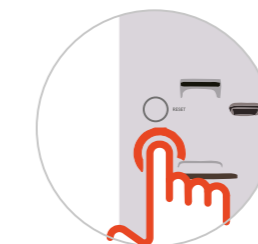
User Register
If you are using it for the first time, please select New Registration and follow steps entering your mobile number or Email id to register. For Existing Customers, please enter your user id and password to login.



3. Add the device

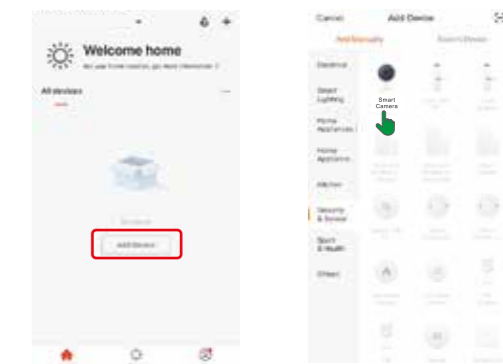
Before Adding the Device, please ensure that the device is in configuration/pairing mode- with a voice notification 'The camera is now ready to begin pairing', (blue light rapidly blinking on the device at the speed of 1 time/second).

If you didn't hear the voice notification, please RESET the device by pressing the reset button 5 seconds. You can release the button after the LED indicator turned off, the device will restart to default settings automatically.



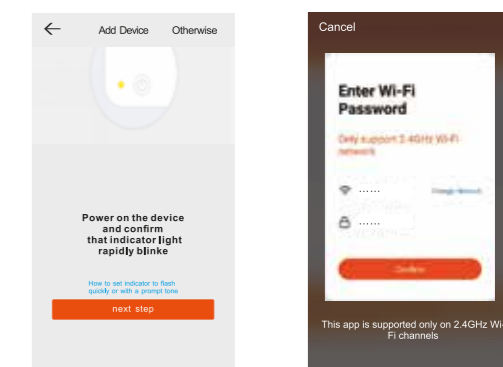
4

Open the "ENERJSMART" app and tap "Add Device"
Select device type: Security & Sensor - Smart Camera, then make connection with the device according to steps.



Choose "Next Step", the name of the Wi-Fi network will automatically be filled in, enter the Wi-Fi password and tap "Confirm".

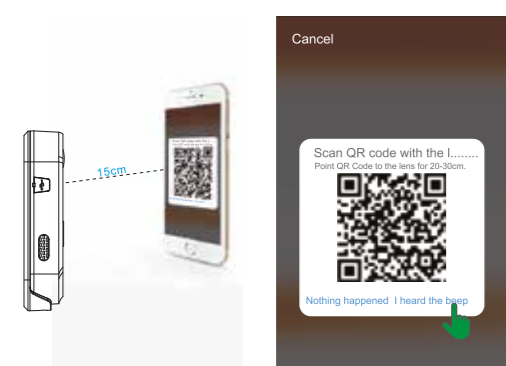
Note: The App will fill the corresponding password automatically if connected with the same Wi-Fi, and you don't need to fill in password again.



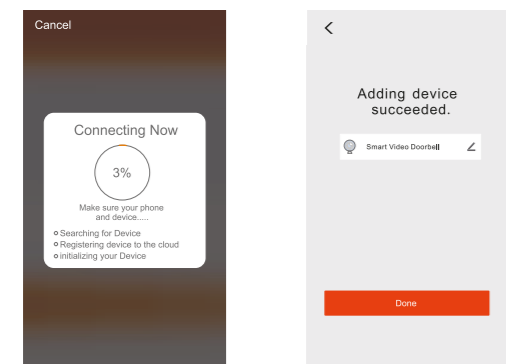
5

Choose "Continue" and use Doorbell's camera to scan QR Code by showing it to your phone. Make sure to keep 15-20cm distance between the mobile device to the doorbell. When you hear the prompt, tap "I heard a Prompt" and wait for device connection to be successful.

If your camera fails to connect, please try to RESET the camera and repeat all steps again.



When the app show Device added successfully, Congratulations! The device is ready for use now!



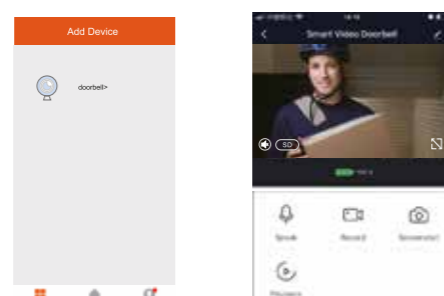
6

4. Wi-Fi Doorbell Functions

Support following functions - Two-way Audio; Video recording to local file, Video Playback with Micro SD card (Micro SD Card not included).

4.1 Live view

In the device list section, it shows all devices which have been successfully added. Click the corresponding device to view Live Doorbell Camera.



7

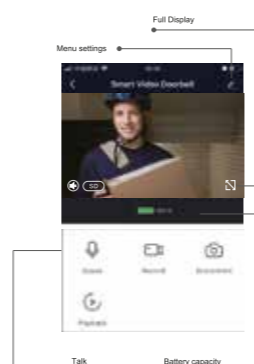
4.2 Micro SD Card Video Playback

Micro SD Card Recording Type: Record continuous video Or Record videos only when someone rings the door bell Or Record Video only when motion detection triggered;
Remark: Currently the device only supports Micro SD card, with the FAT32 system format, others cannot be identified.



5. Device Management

Click the corresponding device to live view videos directly in the device list section, You could choose "... " at the top right corner to enter device setting.



5.1 Modify Device Name

Click "Device Name" on setting page to rename device.

5.2 Device Sharing

Click "Share Device" on setting page to share the device to other family members.

5.3 Device Information

Click "Device Information" on setting page to check device information.

5.4 Power Management Setting

Click "Power Management Setting" to check power working status or set the low battery alarm threshold.
Option:10%~50%

5.5 Basic Function Setting

Click "Basic Function Setting" to set below function:
Flip Screen:on/off; Time Watermark: on/off; Talk mode: One-Way Talk/Two-Way Talk.

8

5.6 Basic Function Setting

Click "PIR" to set the sensitivity.
PIR: Low/Medium/High/Off
*Off: Close PIR function.

*Low: Wake up and record footage if any motion in front of camera has been detected for over 7 seconds. A notification will be sent to your mobile device at the same time.

*Medium: Wake up and record footage if any motion in front of the camera has been detected for over 5 seconds. A notification will be sent to mobile devices at the same time.

*High: Wake up and record footage if any motion in front of the camera last has been detected for over a second. A notification will be sent to mobile devices at the same time.

Note: In crowded environment, it is recommended to close or set the device to LOW sensitivity to reduce unwanted wakeup and notification push to extend battery life.

5.7 Memory Card Settings

Click "Memory Card Setting" to check Micro SD card status, include total capacity used and remaining capacity or format memory card.

6. Not for using

- When device is powered by rechargeable lithium batteries. When fully charged, the battery life approximately could be around six months. The mobile device APP will send notification when battery is low. Please charge the device in time if you get the notification.
- Keep the camera within your router's range. Make sure to install the door bell where there is enough WiFi signal strength. Thick or insulated doors can greatly reduce the strength of your Wi-Fi signal even if your router is near by. Trial testing before installing the camera, is recommended.
- The device is designed based on low power consumption component, it can remotely wake up from the APP, by PIR human motion detection, or when the doorbell is pressed. The device will work for 30 seconds after wake up each time, after which it will go back to standby.

9

Video Doorbell Specification

Resolution	: 1024*720 / 1920*1080
Recording Angle	: 166° Degree
IR ED	: 6*850mm
Wi-Fi	: IEEE 802.11 b/g/n
Audio	: Two-way talk, noise cancellation
Memory Type	: Micro SD Card(upto 64GB, Not included)
Battery	: 2 x 18650 Battery
Monitoring	: Doorbell button, motion detection, remote wake up
Power Consumption	: Standby: 20uA; Working: 170mA

*2 x 18650 battery (total 5200mAh) normally can supports 3-6 months usage.

Ding-Dong Chime Pairing

Code Pairing:

- Long press the button on the chime, till it's indicator light is always ON.
- Press the button of the doorbell to complete pairing.

Reset:

- Multiple connections:
 - 1 Ding-Dong chime can connect with up to 12 doorbells.
 - 1 Doorbell can connect to unlimited number of Ding-Dong Chimes.



10

Chime Specification

Operating voltage	: AC 90V ~ AC 250V 50Hz/60Hz
Output power	: 0.15W
Standby power consumption	: ≤0.5mW
Operating current/static standby	: 120mA/10mA
Optional music	: 60 songs optional
Volume	: 5 level adjustable (maximum volume up to 100 dB), minimum volume is silent
Working frequency	: 433.92 MHz±75KHz
Receive sensitivity	: -110dbm
Colour	: White / Black
Size	: 70*45*48mm (UK PLUG)
Net weight	: 65G/PC
Product size	: 70*52*33mm

Features

- Long battery life, 2 x 18650 battery can support up to 6 months of usage.
- Exquisite image recording with wide angle lens.
- Fast mobile device remote wake up in less than 1 second.
- 2.4GHz Wi-Fi connection.
- High quality two-way talk noise cancellation.
- PIR motion detection, notification will be sent to your smartphone whenever there is motion detected in front of your camera. Never miss a visitor on your door!
- Day / Night mode automatic switching ensures the best image quality 24x7.

11