

ENER-J®

Smart Home Living

Smart Cylinder Doorlock

Suitable for all the Doors with Thickness 35mm-70mm



1.Product Introduction	3
------------------------------	---

2.Installation Instructions

Product Components	7
Measure door thickness	8
Adjust Cylinder Cam	9
Installation Instruction on the Door	11

3.Function Settings

App Download	14
Add Lock	15
Add Fingerprint	17
Add Permanent Passcode	19

Add Temporary Passcode	21
Member Management	22
Reset by App	24
Reset by Key	25
RFQ	26



Product Introduction

This smart lock cylinder is an intelligent solution to replace mechanical lock cylinder without drilling hole on the door and replacing lock body, and has a patented adjustment structure for various door thicknesses. ENERJ SMART App supports more than 30 languages worldwide and can be download and applied in 159 countries and regions. Advanced electronic and biometric technology enables the smart lock to have intelligent recognition capabilities, making users' work and life easier and more convenient.

This smart lock can be used for private homes, commercial offices, residential buildings and more.

Please read this manual carefully before using this product.

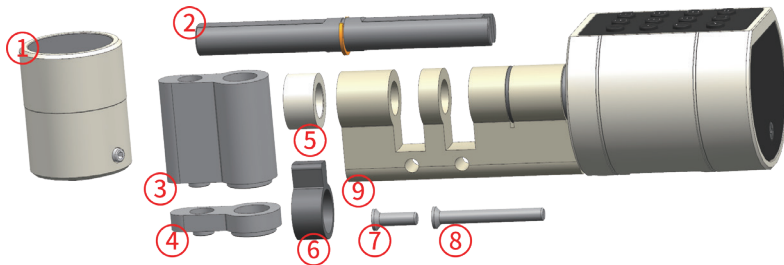
Product Introduction

Unlock Modes	Fingerprint: 100
	Passcode: 100
	Mechanical Keys
	ENERJ SMART
Power Supply	4 AAA batteries
Scramble Code	16 digits total
Work Temperature	-25-65°C
Work Voltage	4.8V-6.2V
Fingerprint type	Semiconductor Embedded Fingerprint
Door Thickness	35mm-70mm

Product Introduction

	Safety Assistant Function	
1	Low battery alarm	when the voltage is lower than 4.8V, the alarm is activated each time with the unlock, and the lock could be unlock 100 times after first alarm.
2	Scramble code function	It supports front and back dummy passcodes to prevent from peaking.
3	Access records query	You can check access records at anytime
4	USB emergency interface	you can charge the lock to unlock the door when the battery run out

Product Components



1.Knob

2.Spindle

3.Long cover

4.Short cover

5.Ring

6.Cylinder Cam

7.Short Screw M4

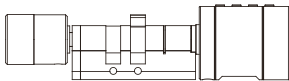
8.Long Screw M4

9.Lock Cylinder

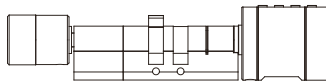
Measure door thickness

1.If door thickness is within 35mm to 50mm, Cylinder Cam doesn't need to be adjusted, and the smart lock cylinder can be installed directly.

2.If door thickness is within 50mm to 70mm, Cylinder Cam need to be adjusted according to the instruction of "Adjust Cylinder Cam".

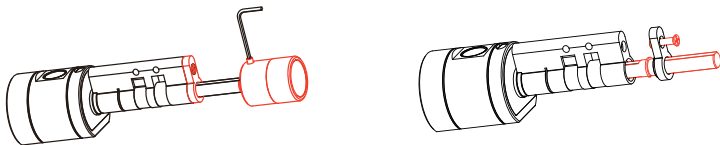


35mm to 50mm

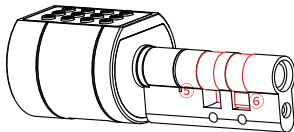


50mm to 70mm

Adjust Cylinder Cam

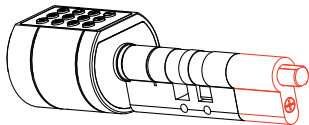


1. According to the above figure, use Allen Wrench to remove Knob ① by loosening the screw on Knob ①. And use a screwdriver to loosen Short Screw M4 ⑦ on Short Cover ④, and then remove Short Cover ④ and Spindle ②.

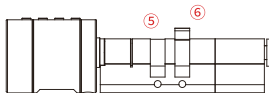


2. Remove Ring ⑤ and Cylinder Cam ⑥, and swap their position according to the above figure.

Adjust Cylinder Cam

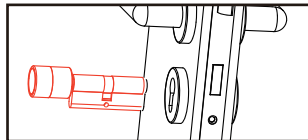
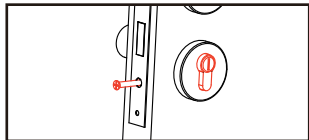


3. According to the above figure, insert **Spindle** ② to its original position, and then install **Long Cover** ③ by screwing **Long Screw M4** ⑧ tightly.

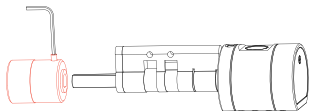


4. Confirm the position of **Ring** ⑤ and **Cylinder Cam** ⑥ according to the above figure, and then the adjustment of cylinder cam is finished, and the next step is to install lock on the door.

Installation Instruction on the Door

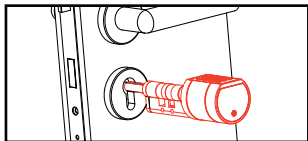


① Use screwdriver to disassemble old cylinder from the lock by unscrewing the cylinder screw, according to the above figure.

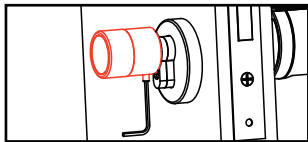
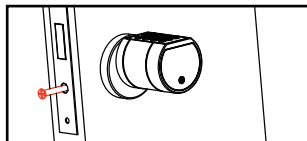


② Use Allen Wrench to remove **Knob①** by loosening the screw on Knob①.

Installation Instruction on the Door

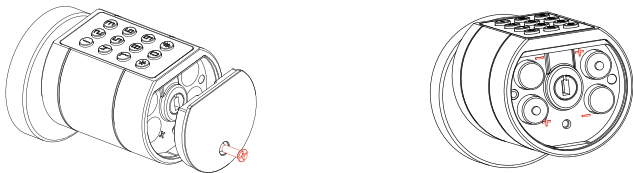


③ Insert **Lock Cylinder**⑨, and then install cylinder screw while making cylinder screw align to the screw hole of **Lock Cylinder**⑨.

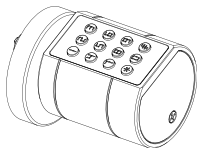


④ Using Allen Wrench to install **Knob**① by fasten the screw on **Knob**①.

Installation Instruction on the Door



⑤ Using screwdriver to remove Battery Cover, and install 4 AAA batteries according to positive and negative pole.



⑥ Install Battery Cover, and fasten the screw, and when you hear a beep, the installation is finished.

Download “ENERJ SMART” from the App store or Google Player by scanning the QR code or searching the “ENERJ SMART” app.



Android

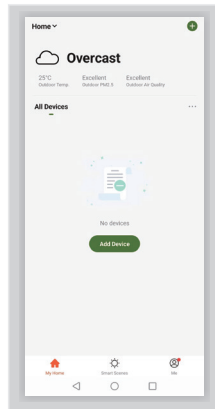
Scan QR code to
download app



iOS

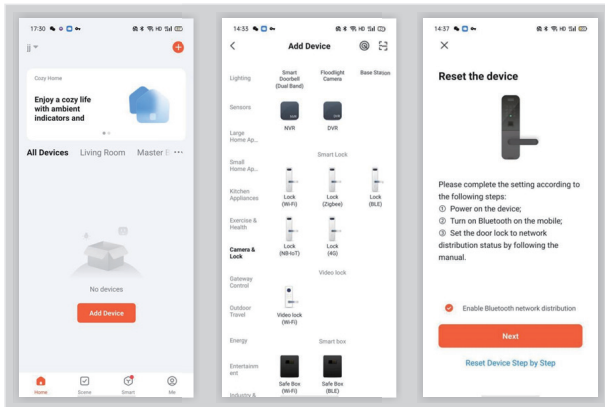


App Download

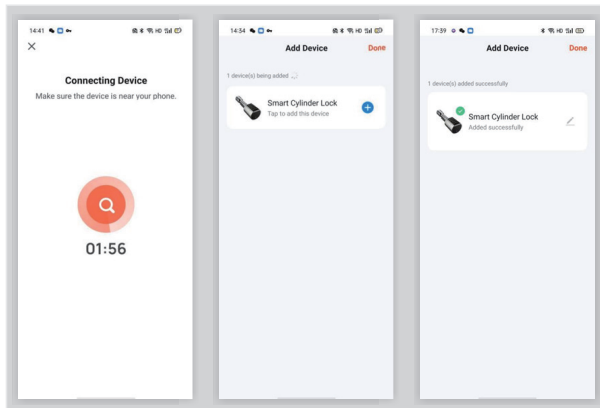


Add Lock

1. Tap "Add Device".
2. Select your lock type "Lock(BLE)".
3. Tap "Next", and Activate the lock's Bluetooth by tap "#" on the lock's keypad. Please make sure you are near the lock in the Bluetooth range.



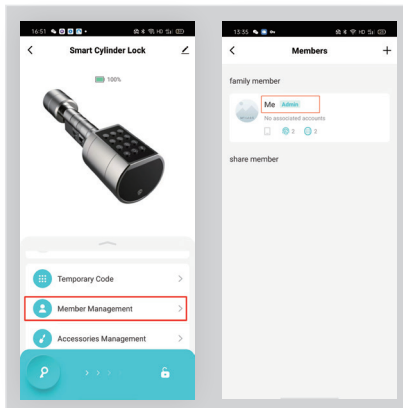
Add Lock



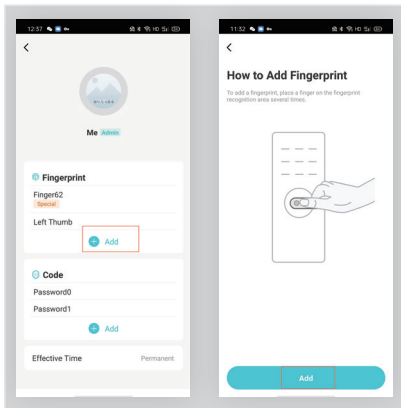
4. In device list, select the lock by tapping "+", and then the lock is added successfully.

Add Fingerprint

1. Tap "Member Management".
2. Select member.



Add Fingerprint



3. Tap “Add”.

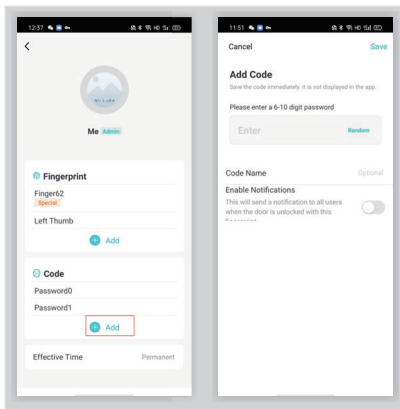
4. Press your fingerprint 5 times on the fingerprint sensor.

Note: Every time press fingerprint, fine adjust the position of finger to ensure that fingerprint is fully recorded.

5. You should see it is done successfully.

6. Test the fingerprint

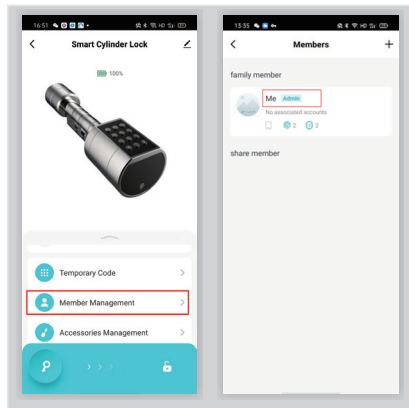
Add Permanent Passcode



3. Click "Add".
4. Input passcode or choose from the random passcode.

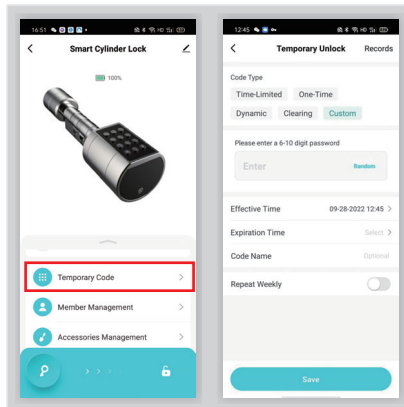
Add Permanent Passcode

1. Click on "Member Management".
2. Select member.



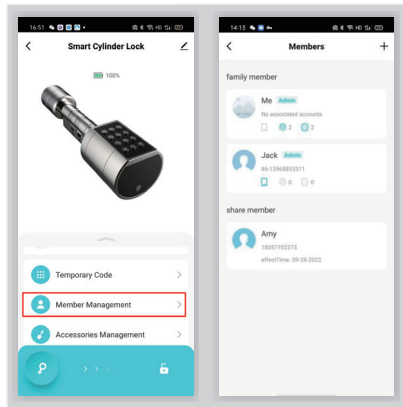
Add Temporary Passcode

1. Click on "Temporary Code".
2. There are four code types: Time-Limited, One- Time, Dynamic, Custom, choose the right one for you.

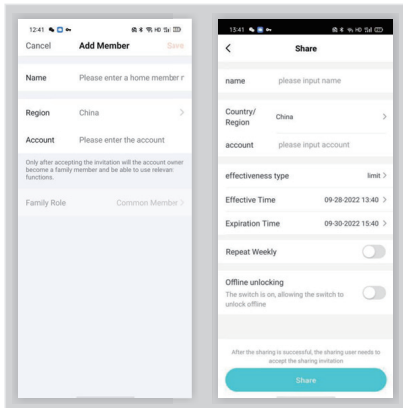


Member Management

1. Click on "Member Management".
2. There are "family member" and "share member" in Member Management list.



Member Management



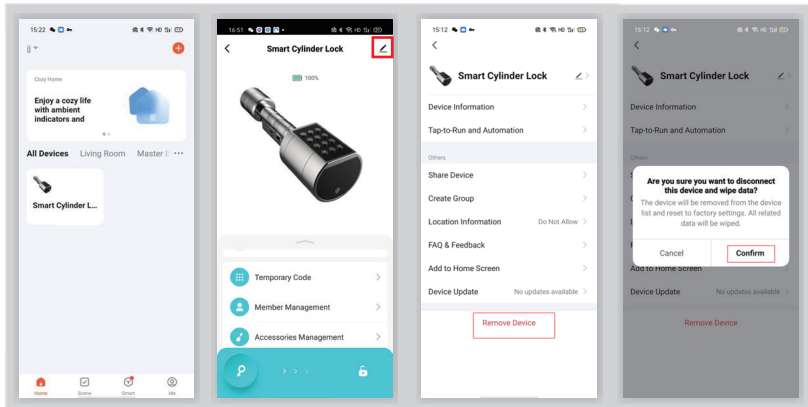
3. For family members: it will be able to enter the family group, to control and use all products in family group.
4. For share members: only appears in the member list of the current door lock. The valid period of users can be set.

Reset with App

1. Choose the lock and click on the top right-hand corner.

2. Click on “Remove Device” and confirm.

(Note: If the lock is offline, you need to slide your finger on the main interface to make the lock online.)



RFQ

1.How can I read the operation records?

- a.Open app
- b.Select your lock
- c.Select "Records"

2.I cannot change the passcode, it says operation failed.

- a. Ensure your smartphone is within 2 meters of the cylinder when setting the passcode.
- b. Turn off your smartphone's Bluetooth for 10 seconds and then turn it on again.

3. After installation, I touched the keypad, but there was no response.What is the reason?

- a. Make sure if the battery is placed correctly and has enough power.
- b. Check if the battery cover is installed properly.

4.I had a problem registering my fingerprint.

- a.Check if your fingerprints are clean without dirt, water or wear.
- b.Clean the sensor with a soft cloth and try again.

5. What happens if you enter the wrong password into the lock too many times?

After five failed attempts to enter your passcode, your lock will be disabled for 90 seconds. You can try App unlocking.

Reset with Key

1. Remove Battery Cover;
2. Charge the lock by USB interface;
3. Insert key and turn 90 degrees and hold for 3 seconds as shown in Figure 2, after three beeps, input 000#, and after a long beep, wait for 10 seconds, and the initialization is finished, turn and pull out key.

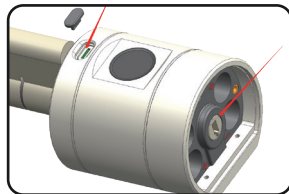


Figure 1

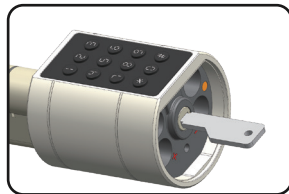


Figure 2



Imported and Marketed By:

ENERJ SMART LTD.

Unit 11D cosgrove Way, Luton, LU11XL,
United Kingdom

Stuck ? Confused ?

Customer Helpline

Phone No.: +44 129 144 6105

E-mail: support@ener-j.co.uk

Web: www.ener-j.co.uk