

**Wired & Wireless
VIDEO DOORBELL**



SKU:SHA5357

Model No.:D3

EAN:5061004711625

Please read it carefully before using the product

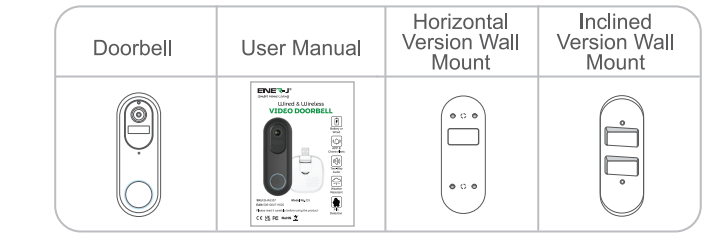
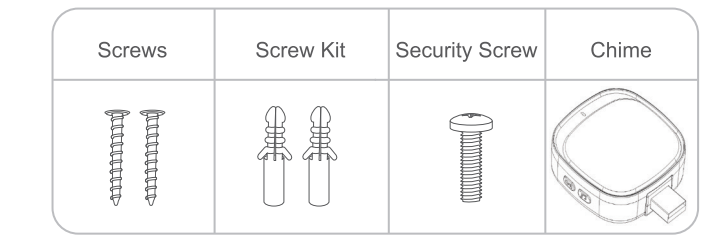
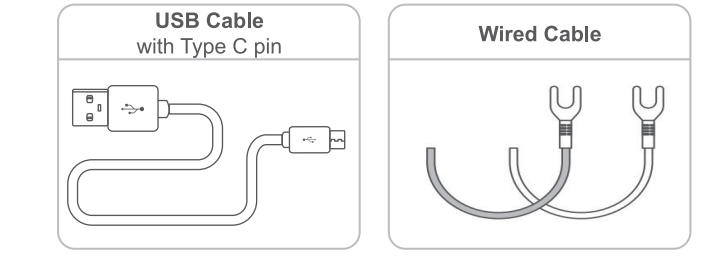
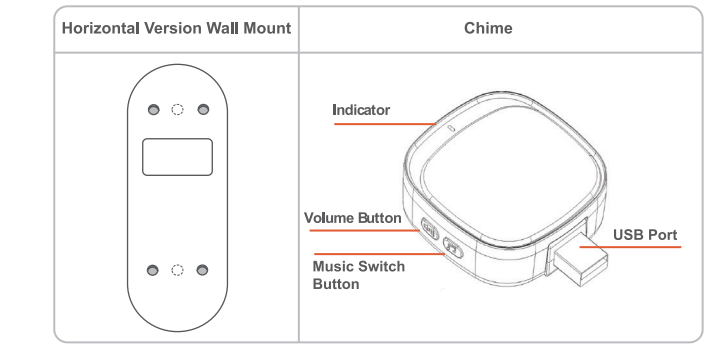
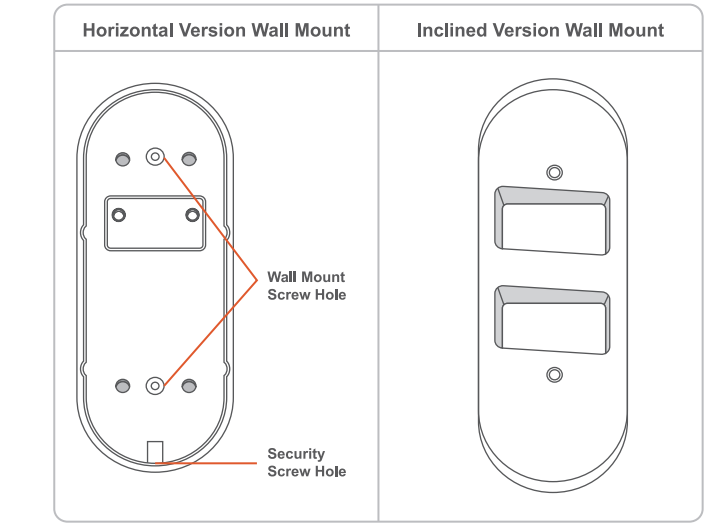
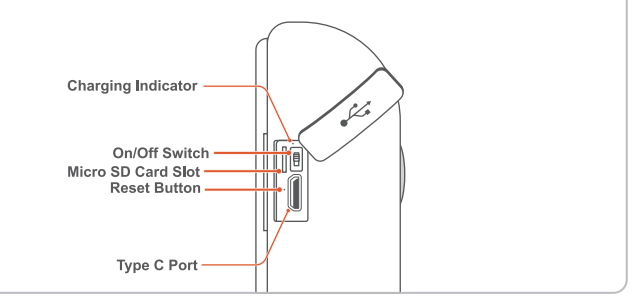
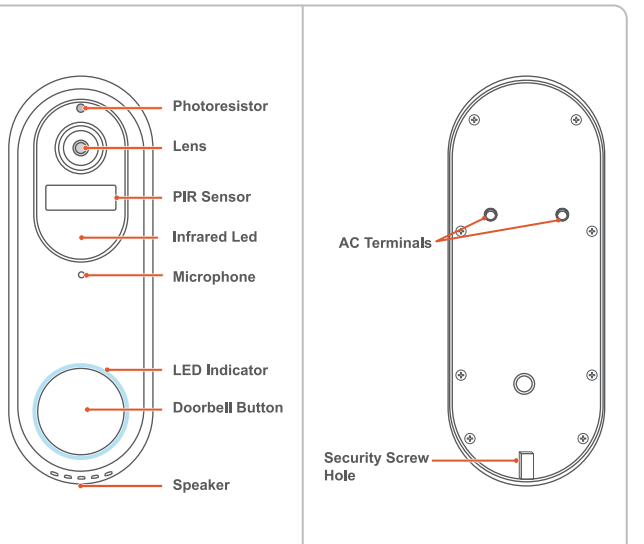


- Battery or Wired
- APP & Chime Alerts
- Two-Way Audio
- Weather Resistant
- PIR Detection

Content

1. Product details	01
2. Hardwired installation	02
3. Wireless Chime	03
4. Download & install APP.	04
5. Account registration & login	05
6. Equipment Connection	06
7. Function instructions	07
8. Attention	08
9. Q&A	09
10. Contact us	10

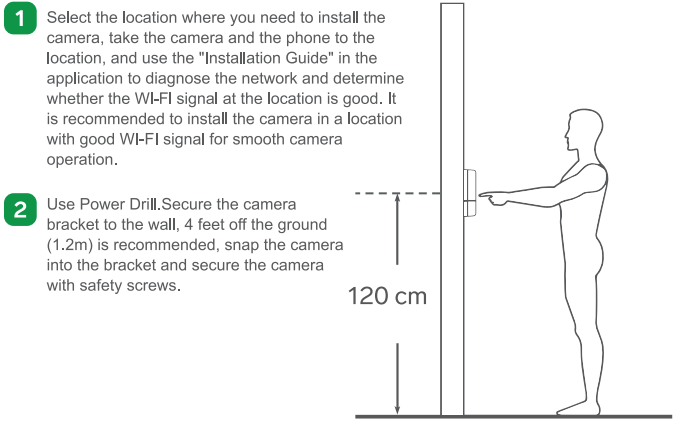
1. Product details



2. Doorbell Installation

Mounting the camera to the wall

- In order to obtain the best product performance and avoid unnecessary environmental disturbances, please pay attention to the following during the installation process:
- Do not install the product nearby to the heat sources, such as outdoor units of Air conditioners, kitchen exhausts, etc.
- Make sure there are no reflections within 5 feet (1.5 meters) of the PIR sensor, otherwise it will interfere with the normal function of the sensor.
- Try to avoid installing the product on the side of a lively road. Frequent pedestrian and vehicles will keep waking up the camera, resulting in frequent alarm messages and extremely fast power consumption.
- Do not install the product very far from the router, the product needs a good WI-FI signal to work properly.

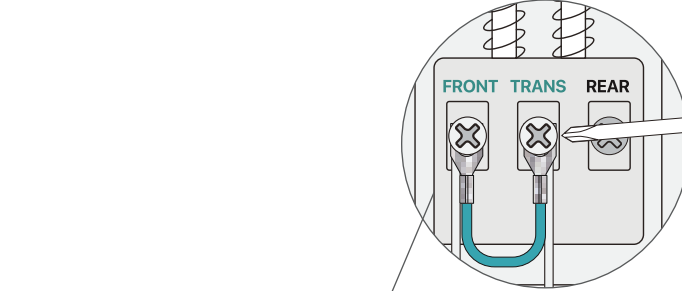


Hardwired Installation (optional)

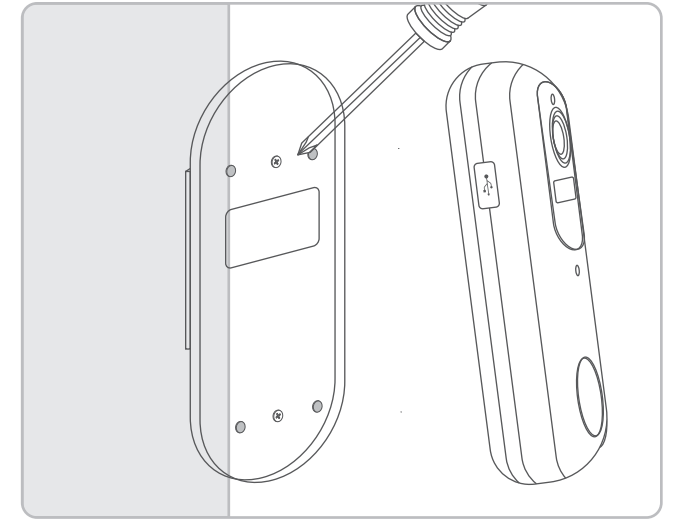
To replace your existing doorbell and mechanical chime, please follow below installation steps:

- Shut off the master circuit breaker in your house.
- Bypass your indoor chime with provided jumper.

In most cases, the existing doorbell circuit looks similar to the image below. Remove the cover of the indoor chime and loosen the "FRONT" and "TRANS" terminal screws. Use the provided jumper to connect the two terminals, and replace the chime cover.

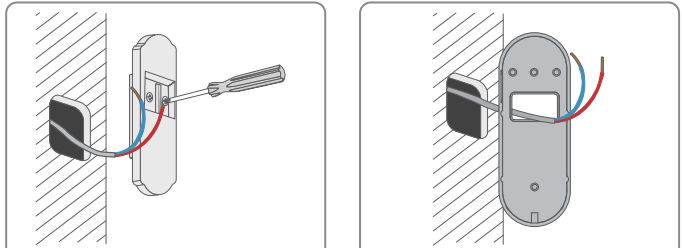


Wireless Installation

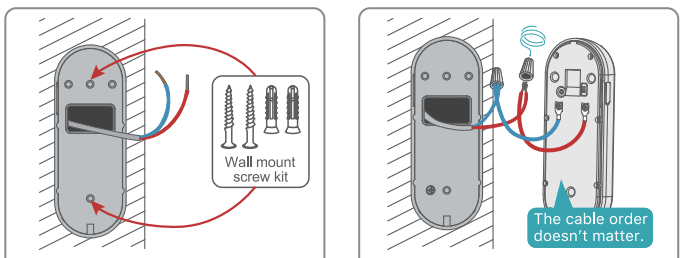


- Release the bracket from the doorbell with the provided tool.
- Mark the screw holes and mount the bracket on your wall with screws.

Replace your existing doorbell.

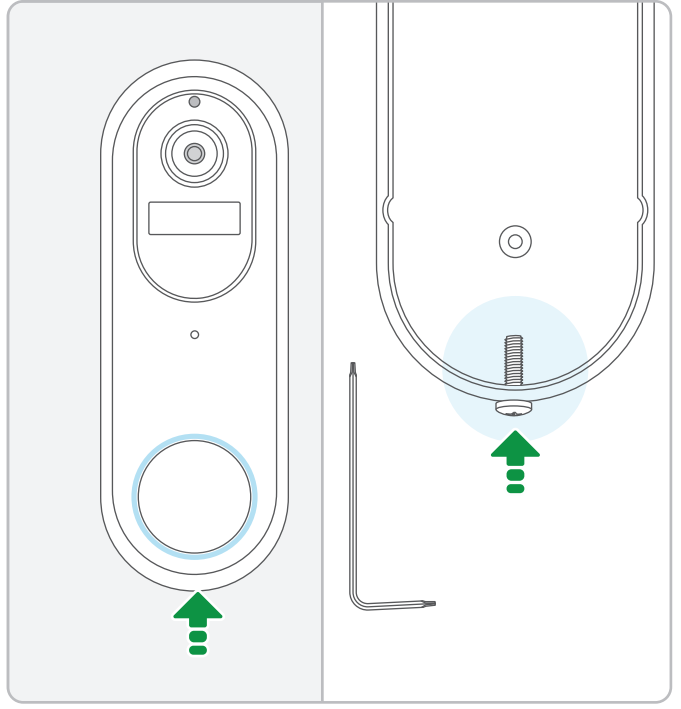


A Remove the existing doorbell from the wall and disconnect the wires.

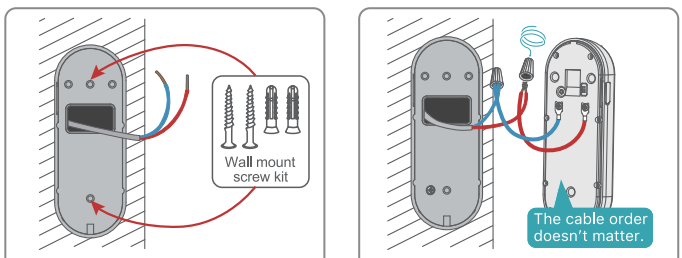


B Lead the wire through the holes on the bracket before mounting.

3 Tighten the security screw at the bottom of the bracket.



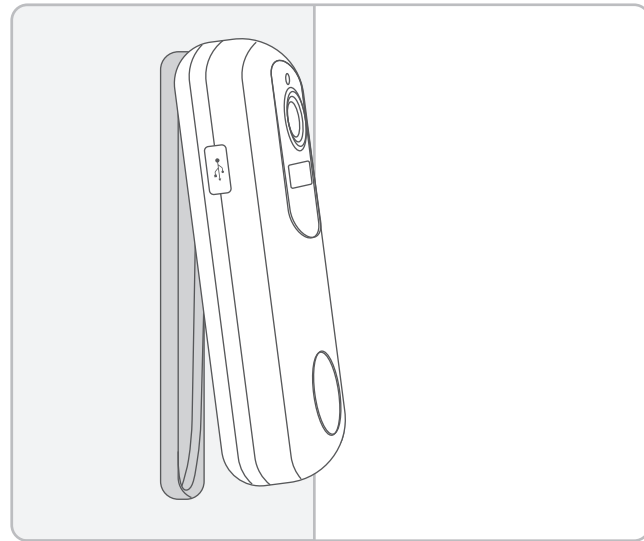
C Mount the bracket on the wall with provided screw set or adhesive tape.



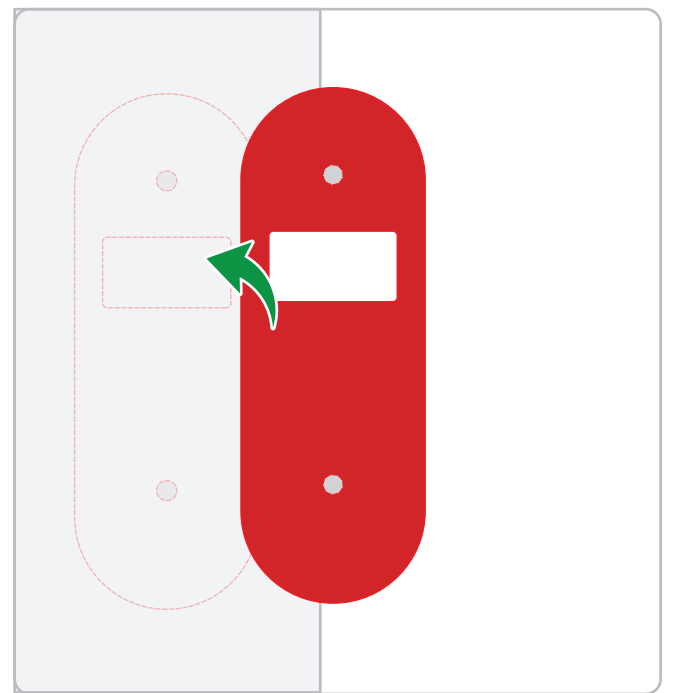
D Attach the wires to the terminals. (Please make sure that the Voltage should be between 12V~24V)

No need to punch on door

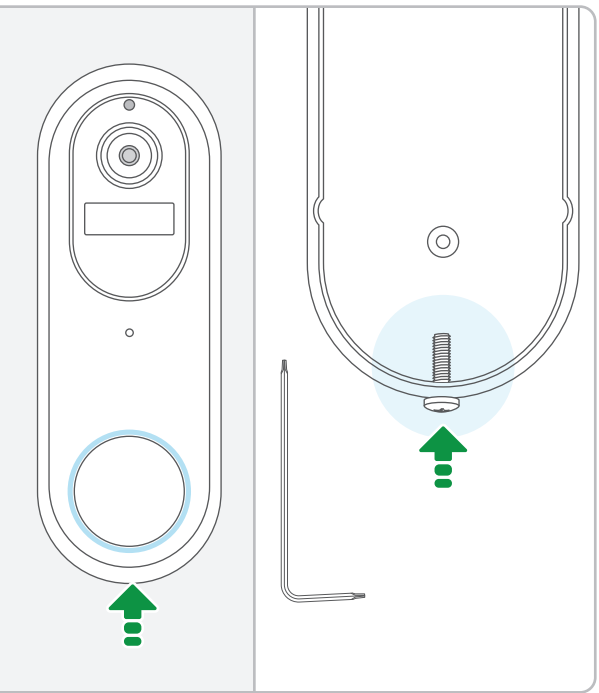
- 1 Feed the wires back to the wall and mount the doorbell to the brackets.



- 2 Adhesive tape is provided to mount the bracket on flat surfaces.

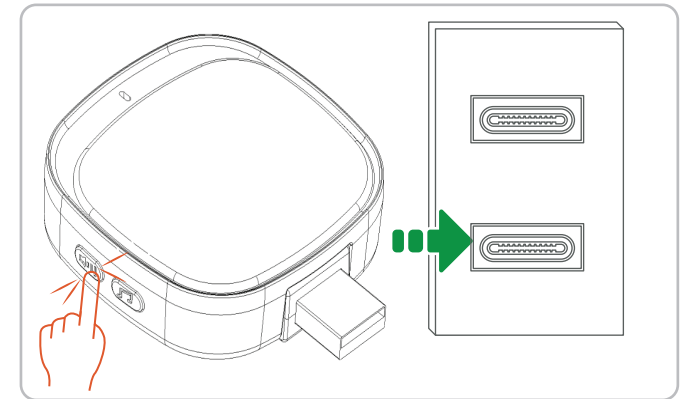


- 3 Tighten the security screw at the bottom of the bracket.



3. Wireless Chime

- 1 Before the setup process, be sure your video doorbell has connected to your phone & plug in your chime to existing USB port
- 2 Press the Tune Button to cycle through 38 different tunes and select a tune.
- 3 Press and hold the Volume Button for 5 seconds until the blue indicator is ON.



Adapter with USB not included. Users can also use their existing USB slots on their extension leads, sockets with USB, etc

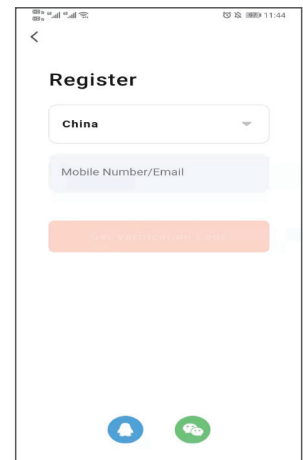
4. Download and Install APP

- 1 Download and install Enerjsmart app by scanning the qr code



5. Registration, login

- 1 Insert your mobile phone number or email address in App and tap Get Verification Code.
- 2 Insert the verification and set the password on App, log in after registration successful.



6. ADD DEVICE / APP PAIRING

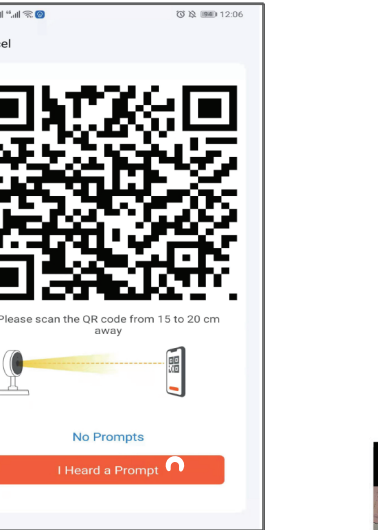
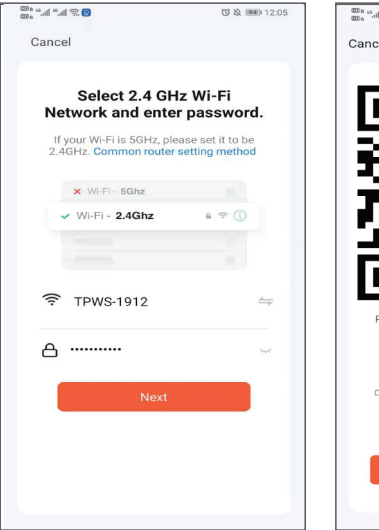
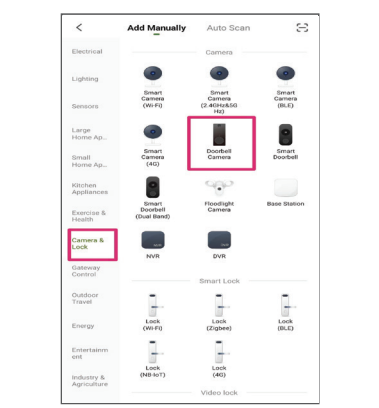
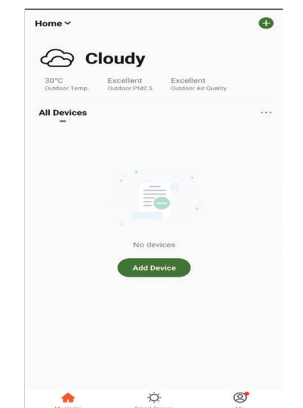
P.S.: Suggest to charge this device more than 10 hours by DC 5V2A battery when you use them at the first time

• Charging Indicator:
On : means Power on
Off : means Power off

• Led indicator:
Solid red: Device is abnormal
Flashing red slowly: Ready for Wi-Fi connection
Flashing Blue quickly: Wi-Fi connecting
Solid on blue: Wi-Fi connected Successfully

Add device manually— QR CODE pairing mode

- 1 Pls turn on the left usb cover and power(ON) and wait for the indicator flash red color and doorbell show the pairing prompt voice.
- 2 Pls enter the "ENERJSMART"APP and login, click "Add Device" or the top right button +
- 3 Choose doorbell or Smart Camera (WiFi) and you will be taken to the page for entering the WiFi password.
- 4 Click next and QR code on the APP will flash which needs to be scanned by the Doorbell.



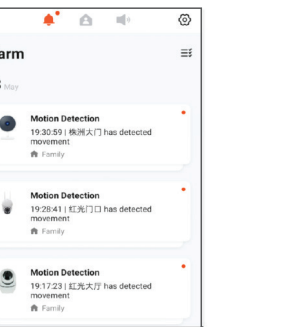
7. Functions

1 PIR Detection

- It is available to set the PIR detection sensitive and suggest to set them as low mode under the circumstance of many people will walk in front of this camera, to avoid of the power can't work long time
- Pir off Mode:** the doorbell will not push the alarm notification
- Low:** can detect the people within 2 meters under stand-by mode.
- Middle:** can detect the people within 3 meters under stand-by mode.
- High:** can detect the people within 5 meters under stand-by mode.

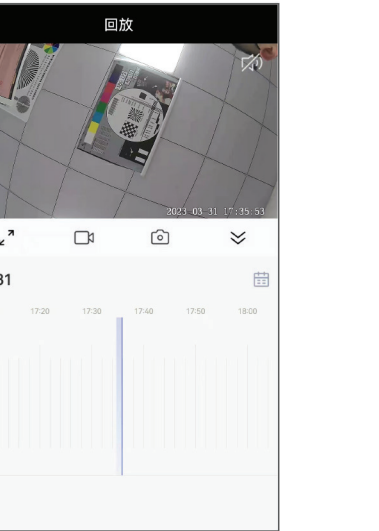
2 Alarm notification

- Click the notification and see the alarm



3 Playback

- Click the replay back and see the recorded video
- TF card must be installed in the Doorbell



8. Attention!

- PIR will be affected by the circumstance, pls kindly note below
 - Pls don't install the position which has terrible air disturbance, e.g.: Air conditioning vents, equipment heat sinks, near fans, near curtains, etc;
 - Pls don't install the camera near the glass or mirror;
- This device is powered by Lithium polymer battery and is expected to be used for upto 120 days when fully charged. The app on your phone will have prompt if the battery is low. Please charge the device promptly after received the prompt.
- Please make sure your device can receive WIFI signal while installing, especially outdoor installation. If WIFI is not available or signal weak, Please use WIFI signal amplifier to increase.
- This device is a low-power smart product which supports remote wake-up by APP, PIR human body detection wake-up, wake up by doorbell. it will enter hibernation automatically and guides the next wake-up after working 30 seconds.

9. Q&A

- The device cannot connect to WIFI?
 - Please confirm that the wireless network to be connected.
 - Make sure the indicator light is in the slow red light state
 - The password is correct, make sure there is no extra spaces.
- What power supply mode does the device support?
 - The device can work with 2x18650 type Batteries OR 12V ~ 24V Hard wired power supply
 - You can charge the device through USB;

- The device is online and there is a trigger event, but the mobile phone cannot receive the push message
 - The mobile app has activated the 'self-starting' function and enabled the notification feature through application permissions. Please disable 'battery optimization' and the function that terminates the app when the phone is in standby mode. It's important to note that optimization methods may vary across different mobile phone manufacturers, so please consider your specific circumstances when making these changes.

- No Recorded Video:
 - Please try formatting the TF Card from the APP.
 - If there are still no recorded videos, then please check the status of the micro SD card. If the app displays a capacity of 0, it is recommended to replace the micro SD card with a new one.

10. Contact us

Stuck? Confused?
Contact our Technical Support team on:
T: +44 (0)1291 446 105 E: support@ener-j.co.uk
Lines are open Mon - Fri (8am to 4pm)

Imported and Marketed By:
ENERJ SMART LTD.
Unit 11D cosgrove Way, Luton LU11XL,
United Kingdom

材质：105克哑粉纸，风琴折
成品折后净尺寸：100x142mm
成品展开净尺寸：900x142mm

