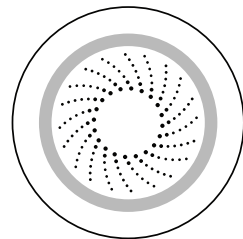
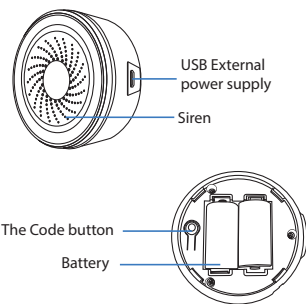


SIREN ALARM
INSTRUCTION



Product configuration



Reset:
 (1) Press the reset button for 6 seconds till the indicator flash rapidly. Then device turns to smart wifi mode.
 (2) Press the reset button again for 6 seconds till the indicator flash slowly. The device turns to AP mode.
 (3) Battery is not provided, users can buy battery separately. This device will work with USB cable included in the box.

Specifications

Battery: CR123A-3V X 2
 USB Power adapter: 5V-1A/2A
 Standby current: 10uA
 Working current: 65mA
 Max current: 100mA
 Wireless type: 2.4GHz
 Wireless standard: IEEE 802.11b/g/n
 Wireless range: 45M
 Operating Temperature: 0°C ~ 40°C (32°F ~ 104°F)
 Operating Humidity: 20% ~ 85%
 Storage Temperature: 0°C ~ 60°C (32°F ~ 140°F)
 Storage Humidity: 0% ~ 90%
 Size: 50mm x 48mm x 48mm

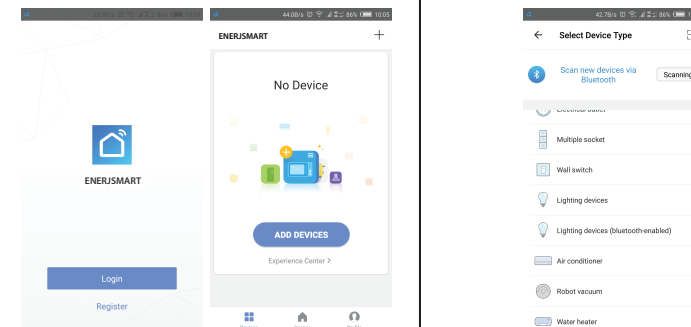
Download App

1. Android phone: Download "ENERJSMART" from Google play store
2. IOS device: Download "ENERJSMART" from APP store.



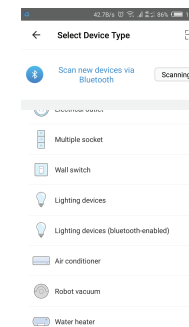
Register and login

1. Run "ENERJSMART" from your smartphone.
2. Register and login



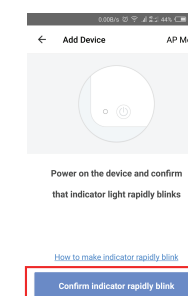
Add Device

Select the item that you want to add, add the device via Smart Wifi or AP mode

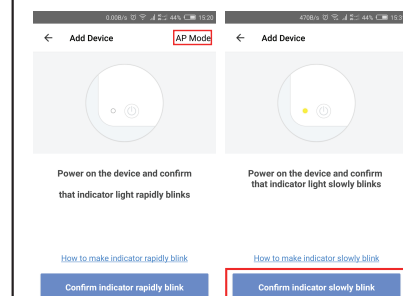


Network Configuration

1. Smart WiFi Mode:
 Pressing the resetting button for 6s, the LED will rapidly blink. That is Smart WiFi mode.

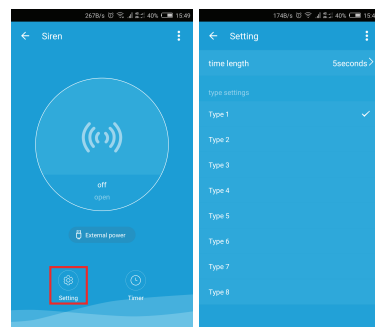


2. AP mode:
 Pressing the resetting button for 6s after the LED blink slowly, the device is in AP mode to configure the network.

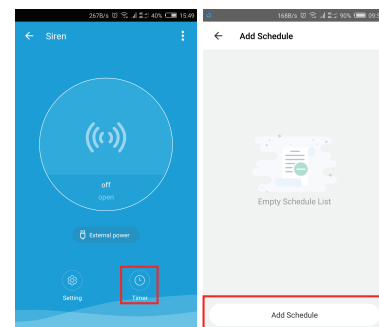


Main function

Setting Alarm duration and alarm sound type

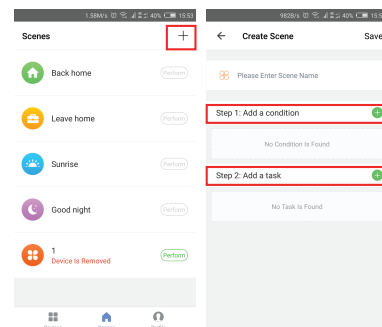


Scheduled alarm (Scheduled alarm will have around 30s deviation)



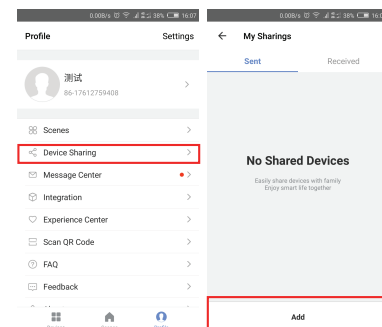
Customize Scenes

Scenes setting (Sound type setting and duration setting must be set)



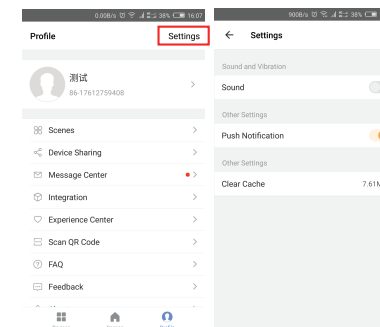
Device Sharing

Device Sharing: Allow others to control the device by sharing device (note: you can delete the sharing in profile setting)



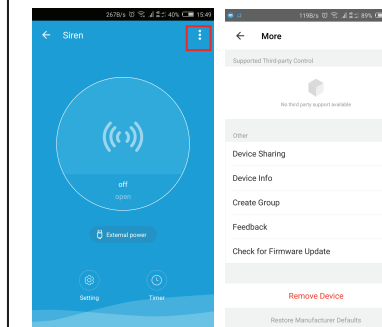
Push Notification

Enable to turn off.



Remove device

The device will restore default settings.



LED State

Device Status	LED State
Smart Wi-Fi	Indicator flashes quickly
AP mode	Indicator flashes slowly
Triggered	The indicator will rapidly blink, and OFF after scheduled time
Reset	Indicator lights up for 4s and after 2 seconds lights off, device goes into configuration mode



Make Your Home Smarter