



**SKU:**

WS1024 | WS1025 | WS1035

WS1041 | WS1042 | WS1043

WS1044 | WS1045 | WS1046

**Model Nos:**

1 Gang: S301 | 2 Gang: S302

3 Gang: S303



alexa

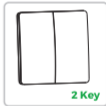
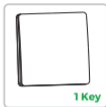
Alexa and Google Home compatible only with our WiFi receivers: WS1018, WS1031, WS1037 and WS1038

## Product Description

The S2 series switch is a push button style kinetic energy switch that uses micro-energy acquisition technology without battery. It can be paired with ENER-J Controllers to work. If it is paired with a dimmable controller, you can turn on/off /dim the lights.

## Product Parameters

Product Series:	S2 Series
Work Type:	Push Button Type
Number of keys:	1-3 keys
Power Supply:	Self-powered(No battery)
Working Frequency:	433MHz
Waterproof Level:	IP67
Working Temperature:	-20°C~+55°C
Control Distance:	80m (outdoor) 25m (indoor)

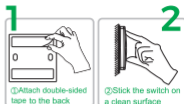


**How to use :** Pairing with ENER-J Wireless Receiving Controller

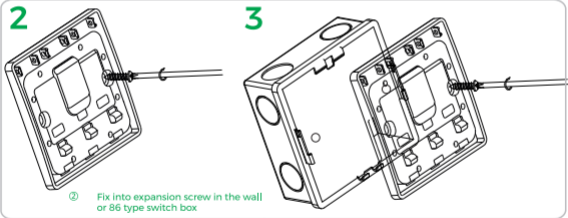
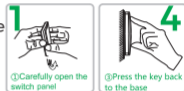
Note: The effective distance data is measured by ENER-J Lab and it will vary due to the changes of the environment in the actual use.

## Switch Installation

**Method 1:** Use the double-sided adhesive tape inside the package to paste the switch on the stable, smooth and clean surface such as clean glass surface, marble, tile surface.



**Method 2:** Open the switch panel as shown in the figure and fix the switch on the wall using the screws or fix the switch on the traditional 86 type switch box by cross plate.



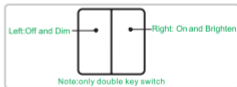
## Pair with Controller

The S2 series switches need to be paired with ENER-J wireless controller. The ordinary pairing method is to press and hold the controller "pairing key" for about 3 seconds, release the "pairing key" button when the indicator light flashes, and then press a button of the S2 switch once (do not press quickly or continuously). The indicator light goes off, which means that the pairing is successful. Then you can control the wireless controller by this button. (more detailed steps, please refer to the receiving controller instruction)

If the controller is a dimmable model and the dimming mode is on, long press on the paired button to dim the brightness circularly and remember the brightness when you turn on the light again.

## Directional Pairing between Two-gang Switch & Controller

In order to meet the user's habits of the switch and to ensure that the multiple controllers can be turned on and off at the same time in the



one-to-multiple mode, we design the directional pairing mode on a two-button switch. The ordinary pairing method is to press and hold the "pairing key" on the controller for about 3 seconds and release when the light is flashing. Then press one of the S2 series 2 gang switches button four times (within 1 seconds), the indicator light goes off, which means pairing is successful.

After directional pairing is successful, the left button can only turn off and the right button can only turn on. Long press the left button can only dim, long press the right button can only brighten.

## Troubleshooting

1. Dropping or other reason causes the panel falling from the switch base.

Remedy: After confirming that the switch base is not broken, press the panel back to the switch base.

2. After pairing is successful, pressing the switch button can only turn off or can only dim but cannot brighten lights.

Remedy: Press and hold the "pairing key" on the controller for about 10 seconds. The indicator light flashes until it goes off. Then pair it again. (Press only one time during pairing and do not press the switch many times quickly)

## Other Instructions

1. S2 series switch is waterproof switch. Protection level is IP67. It can only prevent the damage of switch from water spray in daily life. Don't install the switch underwater or submerge it under water for long time.
2. Directional pairing only supports two-button switches. If one-button or three-button switches are directional paired, they only can turn off and cannot turn on lights. Please pair them again.

3. One switch can be paired with multiple controllers to form one-to-multiple control mode. If you want to use the one-to-multiple control mode, we suggest you to use the 2 gang switch directional pairing. Please refer to the wireless receiving and controller instruction.

**CERTIFICATE  
INSPECTED**

Thank you for choosing ENER-J!

Customer satisfaction is our TOP priority. Please let us know how you felt about your experience.

Happy? We are so delighted that you are pleased with our product. Feel free to express your newfound joy! Share your experience by writing a review.

Not Happy? If you are not fully satisfied with the item you received, have any problems like damages or questions, please contact us. We typically respond within 24-48 hours.

## Stuck? Confused?

Contact our Technical Support team on:

T: +44 129 144 6105 | E: [support@ener-j.co.uk](mailto:support@ener-j.co.uk)

Lines are open Mon - Fri (8am to 4pm)