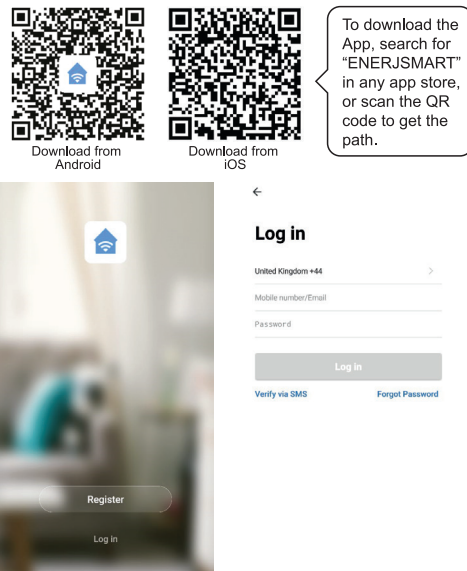


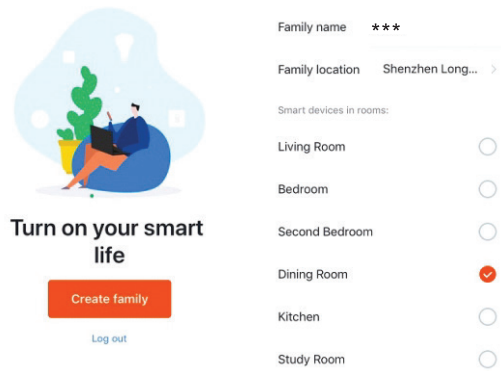
No 1 Download/ Register/ Login



Once it downloaded successfully, register through mobile phone and set password, then login.

1

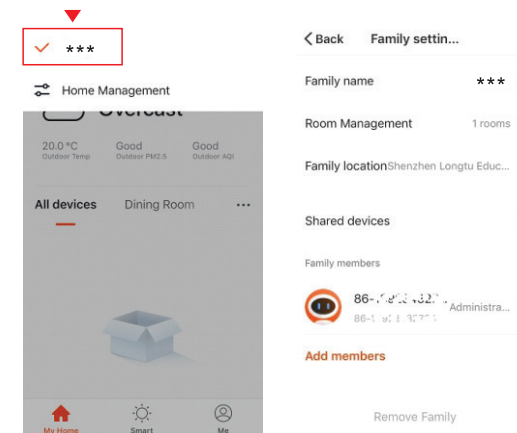
No 2 Create and add family



After logging in, create a family and add family information. Fill in family name, location and choose where your smart lock will be installed. Once all the information set successfully, press "complete" button to save.

2

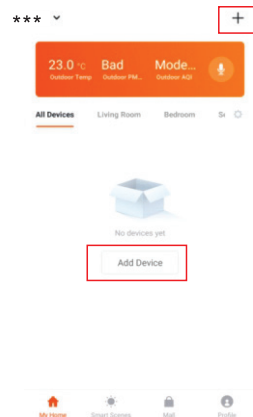
No 3 Home Management/ Family setting



3.1 Home Management
Click family name in left top corner to enter home management page. Also click family name to come to the family setting page.

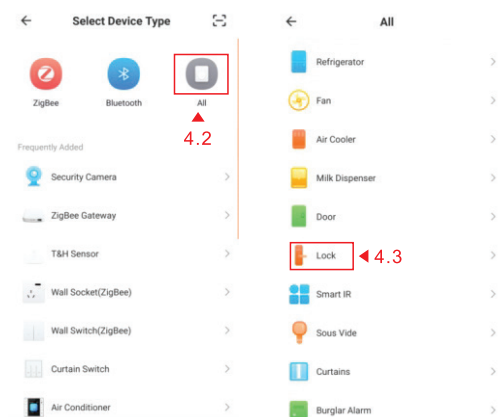
3

No 4 Add Device



4.1 Click "Add Device" on the app home page or the "+" sign at the top right corner to go to the "All Devices" page, where devices can be selected and added as necessary
* A password administrator needs to be set on lock pad in advance for verification use when adding device.

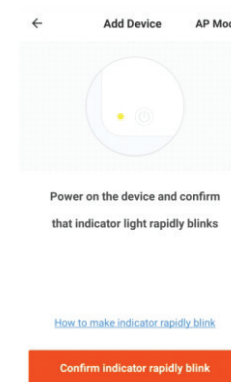
5



4.2 Click "All" to choose device for a configuration.
4.3 Find and click "Lock" as shown in the picture

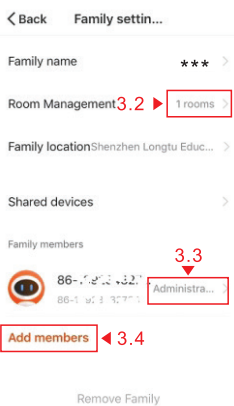
6

No 4 Add Device



4.4 Short press 3 and "#", after verifying the administrator, the lock will prompts "Please connect the WIFI by the phone". When the number 8 starts to flicker, click the button on the phone to make the configuration.
* Please make sure your phone is connected with wifi

7

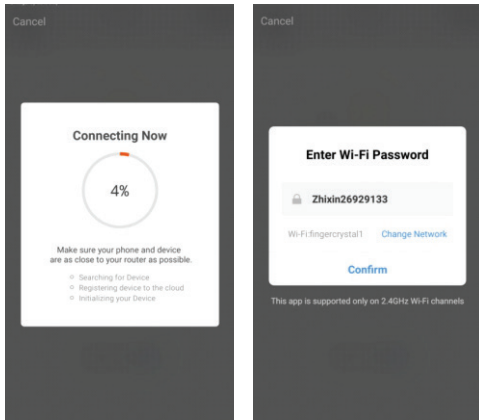


3.2 Add/Delete rooms in a household and manage all room settings in a household in one place

3.3 Combine and classify administrative access of different individuals to devices. All devices and smart scenarios in a household can be shared among household members without having to complete the sharing settings each time

3.4 Add members
Other household members can enjoy control of smart devices in the household, but will not be able to modify, add, or delete a device

4

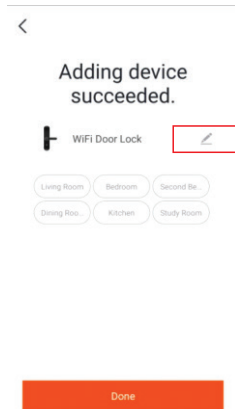


4.5 Connecting

There will be a prompt from the lock when connecting succeed

Please make sure that your wifi channel is 2.4G.

8



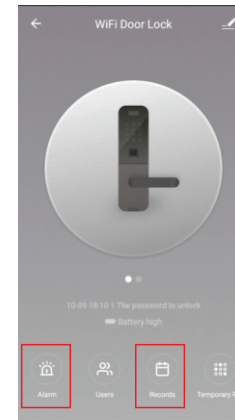
4.6 Finish adding device

4.6.1 Adding succeed, you can change the name, etc

4.6.2 Click "Done" to enter the remote control page

9

No 5 Remote Control

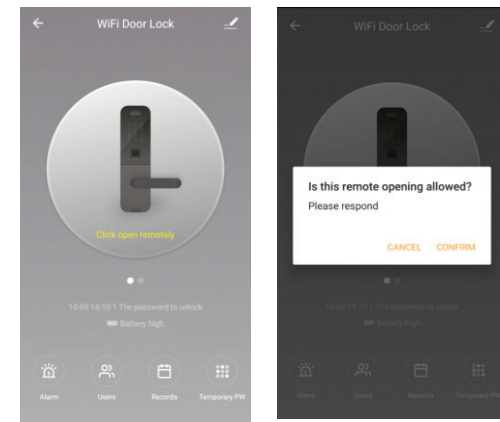


5.1 Related functions

5.1.1 Click "Alarm" to check some warning, such as disassembly alarm, lock key board locked alarm, low power alarm, etc.

5.1.2 Click "Records" to check the unlock records

10



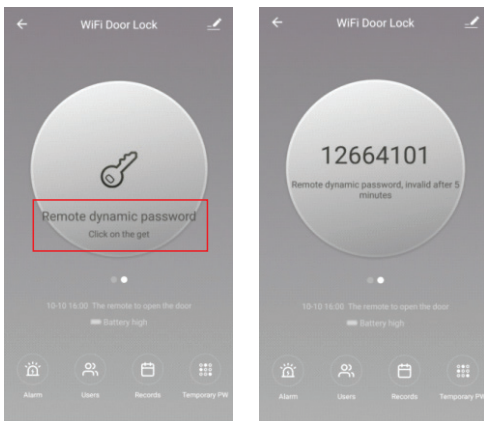
5.2 Remote Unlock

5.2.1 Press "4" + "#" on the lock pad

5.2.2 The App will ask for your confirmation to open remotely

5.2.3 Click "CONFIRM" to unlock

11

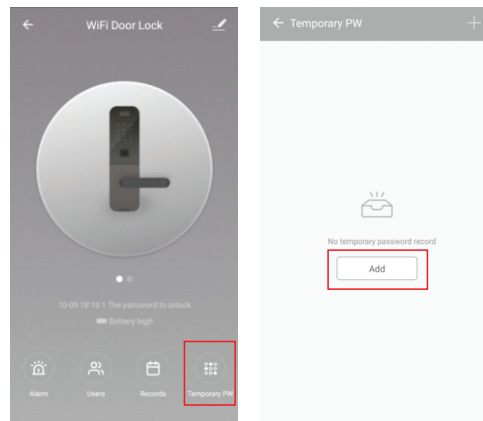


5.3 Dynamic Password

5.3.1 Click phone screen and you will get dynamic password, which will valid only in 5 minutes.

5.3.2 Enter the dynamic password ended with "#" to unlock

12

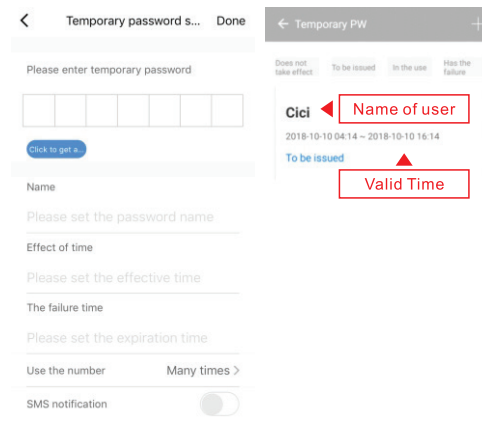


5.4 Temporary Password

5.4.1 Click on the left bottom to set Temporary password

5.4.2 Click "Add"

13



5.4 Temporary Password

5.4.3 Set your own Temporary password, name of user, effect time, failure time and using times. You can also click the blue button to get a random temporary password.

5.4.4 All finished, click "Done" on the top right to exit temporary password setting.

5.4.5 Enter the temporary password ended with "#" to unlock.

14

THE END
THANK YOU