

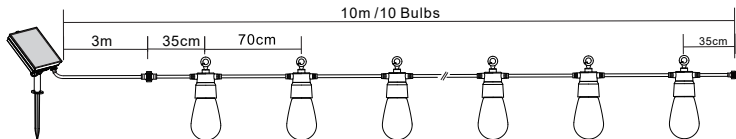
## SOLAR STRING LIGHTS

Lights blinking in Meteor shower

SKU : T474

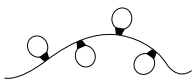
EAN : 5061004711021

Model Number : TM-LS-4.1.2-10L



### List of accessories

**A** 1 x String lights



**B** 1 X SOLAR PANEL

Rechargeable Battery pre-installed



**C** 1x Mounting bracket



**D** 1 x Ground Stake



**E** 1 x USB charging cable



**F** 2 x Wall Plugs



**G** 2 x screw



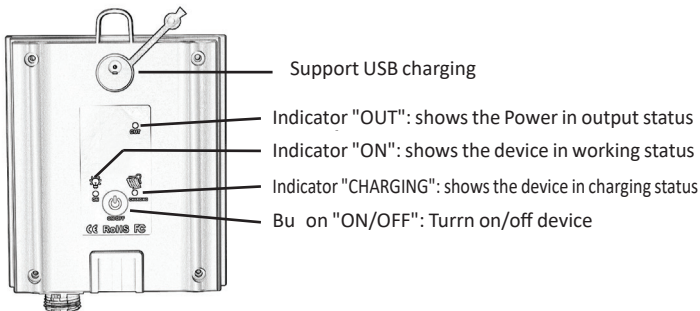
**H** 1xUser manual



## Technical Specifications:

<b>Voltage</b>	:	220-240V 50Hz~60Hz Solar Powered, Output: 4.2V 180mA
<b>Waterproof Level</b>	:	IP44
<b>Power per bulb</b>	:	0.05W
<b>Total Power</b>	:	0.5-0.75W
<b>LED color</b>	:	Red, Green, Blue, Cool White, Golden
<b>Bulb Qty</b>	:	10pcs (1 pc extra cover included)
<b>Cable total length</b>	:	10M
<b>Distance between Bulb</b>	:	70cm
<b>Length from plug to 1st bulb</b>	:	3M
<b>Solar panel spec</b>	:	105x90mm, 1.35W 4.5V/300mA
<b>Battery spec</b>	:	18650 3.7V 1200mAh
<b>Working time</b>	:	>8Hrs after full charged
<b>Warranty</b>	:	1 Year

## User Instructions for Solar Panel



# IMPORTANT, RETAIN FOR FUTURE REFERENCE: READ CAREFULLY



## CAUTIONS: SAFETY INFORMATION

---

- Your solar string lights are not toy, keep them out of reach of small children.
- The solar panel must be mounted outdoors to maximize sun exposure.
- Prior to installation, lay out all components and check against the part list section of this manual.
- Prior to hanging the bulbs, make sure they do not rest upon any hot surface or where they could become damaged.
- Professional installation advised.
- Never look directly into solar string lights
- Do not hang any other objects on the solar string lights.
- Do not cut the wire or make any wiring changes to the solar string lights.
- The bulbs are non-replaceable, please don't unscrew the bulbs.

## PRE-INSTALLATION

- ▶ The solar string lights are shipped with battery pre-installed, before starting any installation, test the bulbs and solar panel.
- ▶ Connect the solar panel to the connector on the string lights.
- ▶ Before the testing, make sure the working ambient is less than 20LUX, (can cover the solar panel, or face the front side of solar panel to ground or table).
- ▶ Press the ON/OFF button, the indicator "ON" and "OUTPUT" will light up, also the bulbs will light up.
- ▶ Then place the solar panel to sun exposure, the light will turn off automatically, also the indicator "OUTPUT" will be off, but the indicator "ON" still working, meantime, the indicator "CHARGING" lights up, showing the device in charging status.
- ▶ Prior to using solar string lights, the solar panel need sun light for 8 to 10 hours

Note: The device can identify day and night: It only works when the ambient light less than 20Lux, it will stop working in daylight, and turn on automatically at dusk or evening.

# Mounting the solar panel

## 1. Wall Mounting

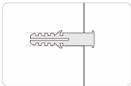
Step 1.

Drilling 2 holes to the chosen surface



Step 2.

Fix wall plugs into holes



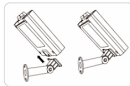
Step 3.

Fix the bracket by screws



Step 4.

Slide the solar panel onto the bracket



## 2. Installation to Ground

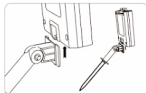
Step 1.

Connect the ground stake to the bracket



Step 2.

Slide the solar panel onto the bracket

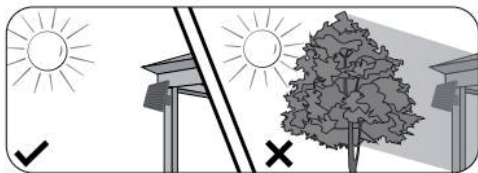


Step 3.

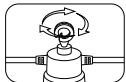
Plug the solar panel to ground



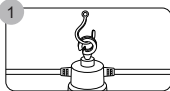
After mounting solar panel, adjust it to the desired angle to optimize sun exposure. Be aware of objects such as trees or property overhangs that may impede the panel's ability to generate a charge. Also don't place the solar panel exposed to street light or any other light source, it may cause the lights not working during night.



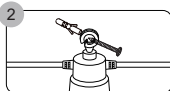
## INSTALLATION OF THE STRING LIGHTS



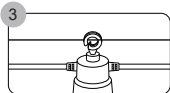
The solar string lights have a variety of possible ways to be mounted. The following are examples of the most common ways:



1. Temporary mounting: Using standard S hooks(not included) or screwhooks(not included), the solar string lights can be mounted utilizing the integrated mounting loops.



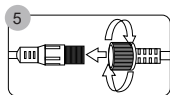
2. Permanent mounting: Using cable tie wraps or zip ties(not included), or using nails or screws into a surface.



3. Guide wire installation: Using S hooks(not included) attach the string lights to a pre-installed guide wire (not included).



4. Structural installation: To create a draping effect for the solar string lights, attach the first bulb to structure, then only mount every 3-4th bulb to create desire effect. Complete the effect by mounting the last bulb to a structure.



5. The final step of installation is to connect the solar panel to the string lights. Simply inert the plug of string light to the socket on solar panel, tighten the plug by screwing the seal over the connection point.

Note: The lighting time of the solar lamp string depends on the local lighting situation.

#### OPERATION:

After an initial 1 day charging in the OFF status, the solar panel is ready to use. Turn on the solar panel by pressing ON/OFF button at backside of panel, then the lights will turn on automatically at night.

#### Stuck? Confused?

Contact our Technical Support team on:  
T: +44 (0)1291 446 105 E: [support@ener-j.co.uk](mailto:support@ener-j.co.uk)  
Lines are open Mon - Fri (8am to 4pm)

#### Imported and Marketed By:

ENERJ SMART LTD.  
Unit 11D cosgrove Way, Luton LU11XL,  
United Kingdom