

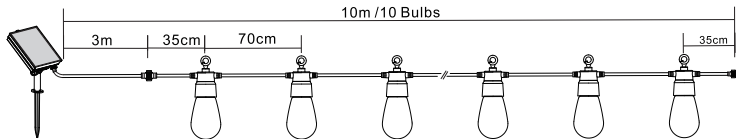
SOLAR STRING LIGHTS

Illumination Warm white+Multicolour

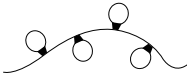








SKU : T475

EAN : 5061004711045

Model Number : TM-LS-5.1.3-10L



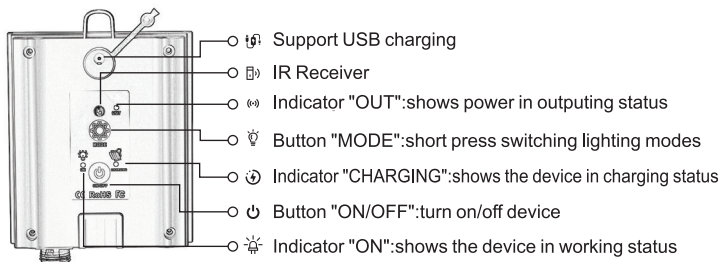
List of accessories

<p>A 1 x String lights</p> 	<p>B 1 X SOLAR PANEL Rechargeable Battery pre-installed</p> 	<p>C 1x Mounting bracket</p> 
<p>D 1 x Ground Stake</p> 	<p>E 1 x USB charging cable</p> 	<p>F 2 x Wall Plugs</p> 
<p>G 2 x screw</p> 	<p>H 1 x Remote Control Battery pre-installed</p> 	<p>I 1xUser manual</p> 

Technical Specifications:

Voltage	: Solar Powered, Output: 4.2V 180mA
Waterproof Level	: IP44
Bulb Type:	: P&T bulb shell
Power per bulb:	: 0.05W
Total Power:	: 0.5-0.75W
Remote	: With remote
Remote control distance	: Up to 6M , Need to align the solar panel
Distance between Bulb	: 70cm
Length from plug to 1st bulb	: 3M
Solar panel spec	: 105x90mm, 1.35W 4.5V/300MA
Battery spec	: 18650 3.7V 1200mAH
Working time	: >8Hrs after full charged
Warranty	: 1 Year

USER INSTRUCTIONS FOR SOLAR PANEL



USER INSTRUCTIONS FOR REMOTE

ON: TURN ON THE DEVICE OFF: TURN OFF THE DEVICE

TIMER SETTING

6H: work 6 hours,
rest for remain 18 hours

8H: work 8 hours,
rest for remain 16 hours

TIMER OFF: CANCEL TIMING

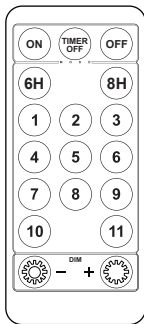
11 MODES SETTINGS

- | | | | |
|----------------|-----------------|-----------------|---------------|
| 1. Combination | 2. C1 Steady ON | 3. C2 Steady ON | 4. C1 Mixture |
| 5. C2 Mixture | 6. SLO-GLO | 7. Breathing | 8. C1 SLO-GLO |
| 9. C2 SLO-GLO | 10. Slow Fade | 11. In Wave | |

DIMMER SETTING

DIM+: Brightness up

Dim-: Brightness down



IMPORTANT, RETAIN FOR FUTURE REFERENCE: READ CAREFULLY



CAUTIONS:SAFETY INFORMATION

- Your solar string lights are not toy, keep them out of reach of small children.
- The solar panel must be mounted outdoors to maximize sun exposure.
- Prior to installation, lay out all components and check against the part list section of this manual.
- Prior to hanging the bulbs, make sure they do not rest upon any hot surface or where they could become damaged.
- Make sure with Professional installation advised.
- Never look directly into solar string lights
- Do not hang any other objects on the solar string lights.
- Do not cut the wire or make any wiring changes to the solar string lights.
- The bulbs are non-replaceable, please don't unscrew the bulbs.

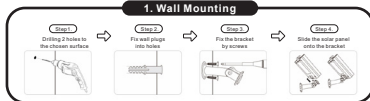
PRE-INSTALLATION

- ▶ The solar string lights are shipped with battery pre-installed, before starting any installation, test the bulbs and solar panel.
- ▶ Connect the solar panel to the connector on the string lights.
- ▶ Before the testing, make sure the working ambient is less than 30LUX, (can cover the solar panel, or face the front side of solar panel to ground or table).
- ▶ Press the ON/OFF button, the indicator "ON" and "OUTPUT" will light up, also the bulbs will light up.
- ▶ Then place the solar panel to sun exposure, the light will turn off automatically, also the indicator "OUTPUT" will be off, but the indicator "ON" still working, meantime, the indicator "CHARGING" lights up, showing the device in charging status.
- ▶ Prior to using solar string lights, the solar panel need sun light for a period of 1 days.

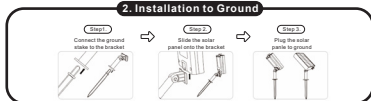
Note: The device can identify day and night: It only works when the ambient light less than 30Lux, it will stop working in daylight, and turn on automatically at dusk or evening.

MOUNTING THE SOLAR PANEL

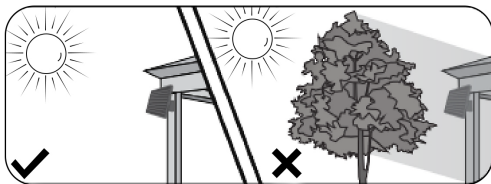
1. Wall Mounting



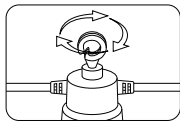
2. Installation to Ground



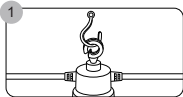
After mounting solar panel, adjust it to the desire angle to optimize sun exposure. Be aware of objects such as trees or property overhangs that may impede the panel's ability to generate a charge. Also don't place the solar panel exposed to street light or any other light source, it may cause the lights not working during night.



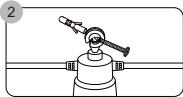
INSTALLATION OF THE STRING LIGHTS



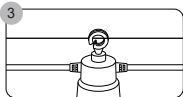
The solar string lights have a variety of possible ways to be mounted. The following are examples of the most common ways:



1. Temporary mounting: Using standard S hooks(not included) or screwhooks(not included), the solar string lights can be mounted utilizing the integrated mounting loops.



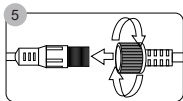
2. Permanent mounting: Using cable tie wraps or zip ties(not included), or using nails or screws into a surface.



3. Guide wire installation: Using S hooks(not included) attach the string lights to a pre-installed guide wire (not included).



4. Structural installation: To create a draping effect for the solar string lights, attach the first bulb to structure, then only mount every 3-4th bulb to create desire effect. Complete the effect by mounting the last bulb to a structure.



5. The final step of installation is to connect the solar panel to the string lights. Simply inert the plug of string light to the socket on solar panel, tighten the plug by screwing the seal over the connection point.

Note: the solar string lights will illuminate for 4-8 hours depending the charge level of the battery.

OPERATION:

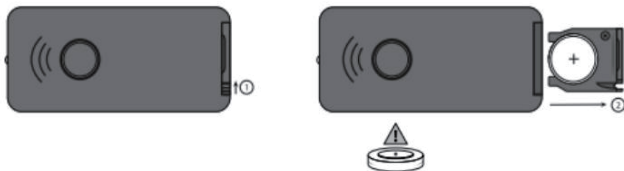
After an initial 1 days charging in the OFF status, the solar panel are ready to use. Pull out the included plastic tab to activate the remote control's battery. Turn on the solar panel by press ON/OFF button at backside of

panel, then the lights will turn on automatically at night, also can use remote to control the light into different function.

Note: if want the lights turn on and off automatically, leave the solar panel in ON status, also the remote control.



WARNING: This product contains a button battery. if swallowed, it could cause severe injure or death in just 2 hours. Seek medical attention immediately.



When need to replace the included battery in remote control, locate the battery compartment on the edge of the remote control.

Push the tab to the right and slide out the battery compartment.

Replace the battery ensuring the right polarity is observed and ensure the replacement battery has the same characteristics as the one that has been removed.

WARNING: KEEP BATTERIES OUT OF REACH OF CHILDREN,.

1. Swallowing may lead to serious injury in as little as 2 hours or death, due to chemical burns and potential perforation of the oesophagus.
2. If you suspect your child has swallowed or inserted a button battery, immediately seek urgent medical assistance.
3. Examine device and make sure the battery compartment is correctly secured, e.g. that the screw or other mechanical fastener is tighten. Do not use if compartment is not secure.
4. Dispose of used button batteries immediately and safely. Flat batteries can still be dangerous.
5. Tell others about the risk associated with button batteries, and how to keep their children safe.

Stuck? Confused?

Contact our Technical Support team on:
T: +44 (0)1291 446 105 E: support@ener-j.co.uk
Lines are open Mon - Fri (8am to 4pm)

Imported and Marketed By:

ENERJ SMART LTD.
Unit 11D cosgrove Way, Luton LU11XL,
United Kingdom