

Smart Wifi **Radiator Valve** with Display Screen



SKU: SHA5348

Model Number: TRV604

Lets Get Started

Welcome

Thank you for choosing our Thermostatic Radiator Valve

Installation

Press the battery compartment lock, lift the cover out, and insert the battery. (Batteries are not included in the package)

Attention









Insert the battery and check that the polarity is correctly aligned



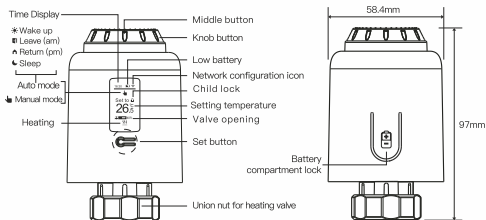
Installation Diagram in Point 3. on Page 3

1. Standard accessories

What's Included

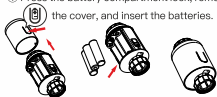
					
TRV604			User Manual		
					
For Danfoss RA valves	For Danfoss RAV valves	For Danfoss RAVL valves	For Caleffi valves	For Giacomini valves	For M28 valves
Adapters					

2. Display Symbols



3. Installation

- ① Press the battery compartment lock, remove the cover, and insert the batteries.



***Attention:**

While inserting the batteries, please make sure the polarity of battery (+/-) is aligned.



- ② Initialize, the mandrel pull back, then "INS..." is displayed on the screen, and dots blink to show the progress



- ③ When the dots "INS..." stop blinking, install the TRV union nut with M30*1.5 thread for heating valve, and then tighten the nut.



- ④ Press the middle button, "ADA..." start blinking, and the device enter valve-adjusting process. After several seconds, the adjustment is completed when initialized screen is displayed.



How to install the adapter correctly

For Danfoss RA valves	For Danfoss RAV valves	For Danfoss RAVL valves
For Caleffi valves	For Giacomini valves	For M28 valves

4. Temperature control mode

Temperature control mode

Press the middle button to switch between Auto mode and Manual mode.

• Auto mode

When "☀️ 🌧️ 🏠 🌙" is displayed on the screen, it is under Auto mode.

Four time periods and setting temperature could be programmed per day, one week as a cycle, based on customized needs.

• Manual mode

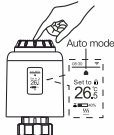
When "👉" is displayed on the screen, it is under Manual mode.

The device will work according to current setting temperature, without controlled by the time period program.

• Temporary mode

When setting temperature under Auto mode, the device enters Temporary mode, and then "🕒" appears on the screen. The device is switched to Manual mode temporarily, without controlled by the time period program. It will return to Auto mode by next time period.

***Attention:** Only Manual mode is available when the device is not connected to Internet.



5. Stop heating and pause heating

- **ON:** In summer, rotate the knob clockwise until "ON" is displayed under manual mode to stop heating. At this time, the heating valve is fully open. This can extend the use life of valve.



- **OFF:** In winter, rotate the knob counter-clockwise until "OFF" is displayed under manual mode to pause heating temporarily. At this time, the heating valve is closed and the frost protection is activated.



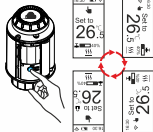
***Attention:** After the antifreeze function is activated, the valve will open when the room temperature is lower than 5°C, and the valve will be closed when the room temperature exceeds 7°C to prevent damage to the radiator thermostatic valve due to freezing.

6. Adjust setting temperature and Screen rotation

Adjust setting temperature: Rotate the knob to adjust setting temperature, stepping by 0.5°C.



Screen rotation: Long press the Set Button for 3 seconds to switch the screen 4 directions available.



7. Open-window function and Anti-scale

Open-window function: First, enter the APP home page to turn on the window detection function, the device will automatically identify whether the window is open. When it is detected that there is cold wind, and the temperature drops by more than 1.5°C within 4.5 min, the open-window function will be activated. At this time, the screen displays "□", and the temperature is set to 12°C.



Anti-scale: TRV executes routine decalcification every Monday at 12:00 to protect the valve from calcification. "CAL" will be displayed on the screen during decalcification.

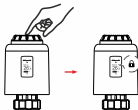


***Attention:** While the open-window function is activated, following operations will terminate it from taking effect.

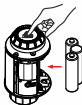
- ① Temperature setting operation on the APP or device.
- ② The detected temperature rises by more than 1.5°C within 4.5 minutes.
- ③ No operation on the APP or device within 30 minutes.

8. Child lock function and Restore factory settings

- **Child lock function:** Long press the middle button for 3 seconds until "🔒" is displayed on the screen to activate the child lock. While the device is locked, long press middle button for 3 seconds until "🔒" disappear to deactivate the child lock.

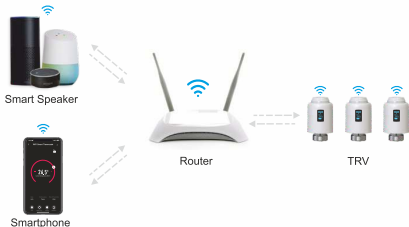


- **Restore factory settings:** Long press the middle button and insert the battery at the same time until "FAC" is displayed on the screen and blinking for 3 seconds, the device will be restored to factory settings and restarted.



***Attention:** Once the device is restored to factory settings, all previous settings can not be recovered.

9. APP remote control and voice control



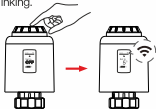
10. Download ENERJSMART APP



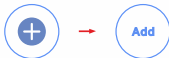
Scan the QR code above or search "ENERJSMART" on App Store and Google Play to download the ENERJSMART APP.

11. Add device

- ① Under manual mode, rotate the knob counterclockwise until "OFF" is displayed. Then long press the middle button for 3 seconds until "Wi-Fi" is blinking.



- ② Enter the "Home" interface of the APP, click "+" in the upper right corner, select the "Add" button in the pop-up window, and finally click "+" to enter the Wi-Fi password interface;

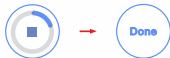


***Attention:** Network configuration can only be done under manual mode.
Please turn on the Bluetooth of your phone in advance.

- ③ Select 2.4G Wi-Fi and enter the password, click "Next", and then wait for the connection to succeed.

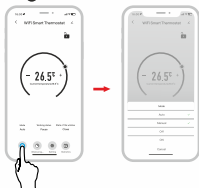


- ④ After the addition is successful, click "Next", and the wifismart thermostat has been added successfully.



12.Mode selection

- Click “**A**” to select mode.



***Attention:** Click “+” or “-” to adjust the setting temperature.

Auto mode: Four time periods and setting temp. could be programmed per day, one week as a cycle, based on customized needs.

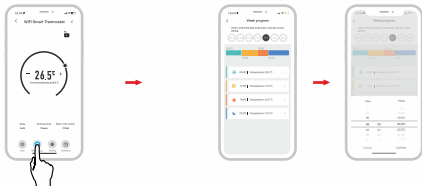
Manual mode: The device will work according to current setting temp. without controlled by the time period program.

Off mode: The valve will be closed to stop heating.

On mode: The valve will open in heating.

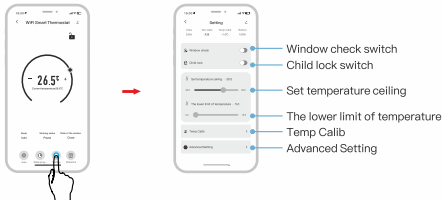
13.Week program setting

- Click “**L**” to enter the week program setting page.
- Set four time periods and setting temperature based on customized needs.



14. Advanced setting

- Click “” to enter the advanced setting page.



15. Statistics

- Click “” to enter the Temperature Statistics.



20.Specifications

Features	Parameters
Application:	Radiator Heating System
Power:	3 * 1.5V AA battery (Not Included)
Standby Current:	6 μ A Min
Temperature Setting range:	5~35°C
Display Accuracy:	0.5°C
Thread size:	M30*1.5mm
Linear Travel:	4.3mm
Dimension(L/H/W):	58.4*97*58.4mm
Protection Level:	IP20
Wireless Gateway App:	ENERJSMART
Temperature Sensor:	Internal air sensor
Voice Control:	Alexa/Google Home
Open window detection:	YES
Weekly programmable function:	YES
Anti-scale function:	YES

16. Device sharing function

- Share the device to other family members, allowing them to remotely control the TRV device.
- Example of mobile **phone A** sharing mobile **phone B**



① Click the Menu button, then click "Share Device"

② Click "Add home member".

③ Fill in account information of home member.

④ Mobile phone B agrees to join

17. Voice control

- After waking up the speaker, you can give following commands:

Amazon Alexa : Alexa,


- * Set the DEVICENAME to 26 degree
- * Drop the DEVICENAME by 1 degree
- * Raise the DEVICENAME by 1 degree
- * Make the DEVICENAME warmer
- * Turn on the DEVICENAME child lock
- * Turn off the DEVICENAME child lock
- * What temperature is the DEVICENAME set to
- * What is battery on the DEVICENAME

Google Assistant : OK google,

- * Set the DEVICENAME to 23 degree
- * Turn on the DEVICENAME child lock
- * Turn off the DEVICENAME child lock
- * Is my DEVICENAME child lock on?
- * Turn on child lock for the DEVICENAME
- * Turn off child lock for the DEVICENAME
- * Set the DEVICENAME to auto
- * Set the DEVICENAME to manual

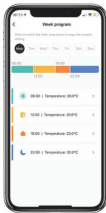
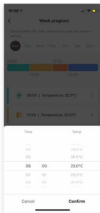
*Attention: "DEVICENAME" is the device name, you can also name it yourself.
The temperature unit of TRV and smart speaker must be identical.

18.Troubleshooting and maintenance

Error code	Problem	Solution
F0	Temperature sensor abnormality	Contact our Tech Support Helpline
F1	Slow valve operation	Check the installation and heating valve
F2	The stroke is too long	Check the fastening of TRV
F3	The stroke is too short	Check the heating valve
F4	Running out of battery	Replace batteries immediately
F5	Valve not detected	To check if the valve is installed
Battery symbol ()	Low battery	Replace batteries within 1 week

Weekly-programmable

Programmable device with customized exclusive temperature plan, up to 4 events allowed to set each day



19.Features & Benefits

- 1.** The motor adopts ultra-quiet technology to minimize noise pollution. It can control valve faster and more accurately.
- 2.** 4 direction display, 360° viewing angle.
- 3.** ENERJSMART APP remote control, with temperature statistics chart, user can check the temperature more intuitively.
- 4.** Intelligent PID algorithm, efficient control of valve opening and closing.
- 5.** The device supports Wi-Fi fast distribution network, no additional gateway is required.
- 6.** Automatic debugging function, equipped with 6 kinds of adapters, suitable for all kinds of mainstream valves.
- 7.** OLED display, Weekly-programmable with 6 events can be set separately for each day.
- 8.** Voice control via Amazon Alexa and Google Assistant.

21. Pairing Instructions:

GB

Manage the temperature of your existing radiators via our APP or Voice control. Rotate the knob clockwise till screen displays 'OFF'. Hold the middle button on the knob for 3 seconds till WiFi logo on screen starts blinking. Go to ENERJSMART APP and click on + (Add Device). Select Thermostat (WiFi) from the devices. Enter WiFi Password and follow the on screen instructions. to pair the device with the APP.

FR

Gérez la température de vos radiateurs existants via notre APP ou la commande vocale. Tournez le bouton dans le sens des aiguilles d'une montre jusqu'à ce que l'écran affiche « OFF ». Maintenez le bouton central du bouton enfoncé pendant 3 secondes jusqu'à ce que le logo WiFi à l'écran commence à clignoter. Accédez à ENERJSMART APP et cliquez sur + (Ajouter un appareil). Sélectionnez Thermostat (WiFi) parmi les appareils. Entrez le mot de passe WiFi et suivez les instructions à l'écran pour coupler l'appareil avec l'APP.

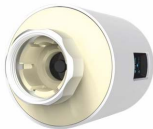
DE

Verwalten Sie die Temperatur Ihrer vorhandenen Heizkörper über unsere APP oder Sprachsteuerung. Drehen Sie den Knopf im Uhrzeigersinn, bis der Bildschirm „OFF“ anzeigt. Halten Sie die mittlere Taste gedrückt den Knopf 3 Sekunden lang, bis das WiFi-Logo auf dem Bildschirm zu blinken beginnt. Gehe zu ENERJSMART APP und klicken Sie auf + (Gerät hinzufügen). Wählen Sie Thermostat (WiFi) aus Geräte. Geben Sie das WLAN-Passwort ein und befolgen Sie die Anweisungen auf dem Bildschirm, um das zu koppeln Gerät mit der APP.

IT

Gestisci la temperatura dei tuoi radiatori esistenti tramite la nostra APP o comando vocale. Ruotare la manopola in senso orario fino a quando il display visualizza "OFF". Tieni premuto il pulsante centrale del pulsante per 3 secondi fino a quando il logo WiFi sullo schermo inizia a lampeggiare. Vai all'APP ENERJSMART e fai clic su +(Aggiungi dispositivo). Selezionare Termostato (WiFi) dai dispositivi. Immettere la password WiFi e seguire le istruzioni sullo schermo per associare il dispositivo all'APP.

Product Pictures



Stuck? Confused?

Contact our Technical Support team on:

T: +44 (0)1291446105
E: support@ener-j.co.uk

Lines are open Mon - Fri (8am to 4pm)

Imported and Marketed By:

ENERJ SMART LTD.

Unit 11D, Cosgrove Way, Luton
Luton LU1 1XL, United Kingdom