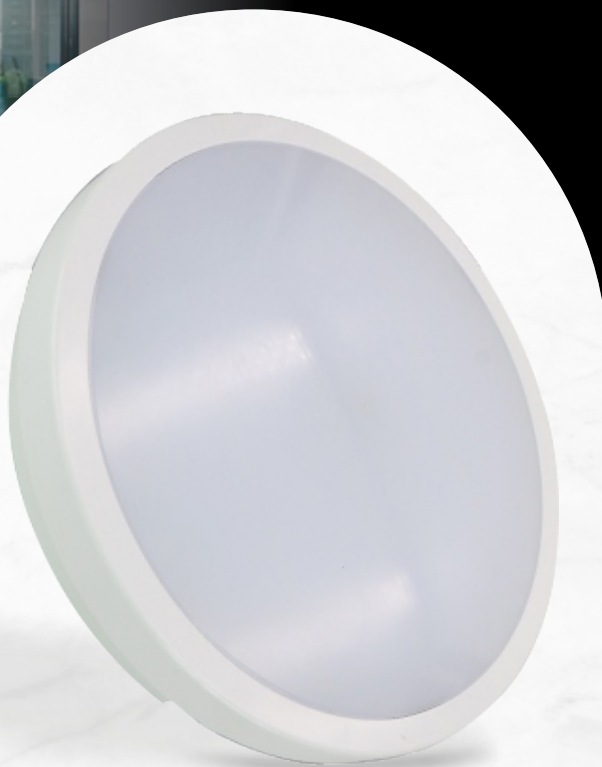




24W LED BULKHEAD CEILING LIGHT

WITH MICROWAVE SENSOR
& EMERGENCY




85lm/w
LUMENS

 **24W**
WATTS

 **IP65**

Ideal for hospitals, nursing homes, schools, and any other commercial or domestic environments, both indoors and outdoors as needed.



This fitting is a 24W LED bulkhead light fitting ideal for outdoor wall lighting complete with a microwave motion sensor. It has an IP65 rating (it is waterproof) and offers a 4000K light. With a 110mm projection and approx.280mm diameter, this bulkhead has a polycarbonate base in white, a gloss white trim ring, and an opal diffuser.

This range of LED bulkheads are robust and versatile with an IP65 rating which protects from dust and jets of water. The sensor is an active motion detector: it emits a high frequency electromagnetic wave 5.9Hz and receives its echo. The sensor detects the change in echo from movement in its detection zone. A microprocessor then triggers the switch light ON command.

Emergency Backup Information

- **Input voltage:** 170V-250V
- **Battery capacity:** 1500mAh
- **First Charging Time:** 24 hours
- **Emergency Backup time:** 3H
- **LED voltage:** 72V
- Detection is possible through doors, panels of glass, and thin walls.
- They are ideal for hospitals, nursing homes, schools, and any other commercial or domestic environments, both indoors and outdoors as needed

Specifications

Wattage	24W
Housing Material	ABS
Housing Colour	White
CCT	4000K
Input Voltage	170V-250V. 50/60 Hz
Product Measurement	ø280*63mm
RA	80
PF	>0.5
Dimmable	No
Power Supply	Internal CE standard IC Driver
Lumens Per Watt	85
Luminous flux	2040 lm
Beam	180
IP Rating	IP65
IK Rating	IK10
Suitable temperature	-20~+445
Switching cycles	≥5000
Starting time (Seconds)	<15
Energy efficiency class	A+
Microwave Sensor	Inbuilt Microwave Sensor
Static Power Dissipation	<0.5W
Microwave Frequencies	5.8 GHz +/- 75 Mhz
Microwave Power	<0.2 mW
Detection Range	(Diameter x Height): 10m x6m
Detection Angle	30~150
Installation Height	6m
Accessories	Surface Mounting Kit Included
Quick Connector	Included
Colour Box Dimension	290*75*390mm
Product Weight with Colour box	1.100 Kgs
Pcs per Master Carton	12 pcs
Master Carton Dimension	0.6x0.48x0.31CM
Master Carton Weight	18Kgs
Lifetime	30000 hours

Thank you for choosing ENER-J!

Customer satisfaction is our TOP priority, please let us know how you felt about your experience. Happy? We are so happy that you are pleased with our product. Feel free to express your newfound joy! Share your experience by writing a review.

Not Happy? If you are not fully satisfied with the item you received, have any problems like damages, or questions, please contact us. We typically respond within 24-48 hours.

Stuck? Confused?

Contact our Technical Support team on:

T: +44 (0)2921 252 473 | E: support@ener-j.co.uk

Lines are open Mon - Fri (8am to 4pm)