

Pack of
2

ENER-J®

Smart Home Living

1195x595 60W LED Panel Light

3000K

4000K

6500K

CCT SWITCHABLE

 **60**
Watts

 **6000**
Lumens

 **Flicker**
Free

SKU CODE:

£816

Model No.:

ZL-010-60W

Ean Code on box:

5061004713933

Packing

Inner packing Qty

2 pc/ Box

Outer Carton Packing Qty

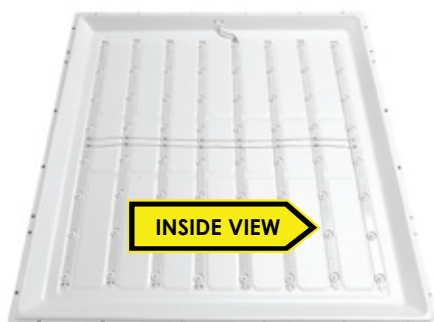
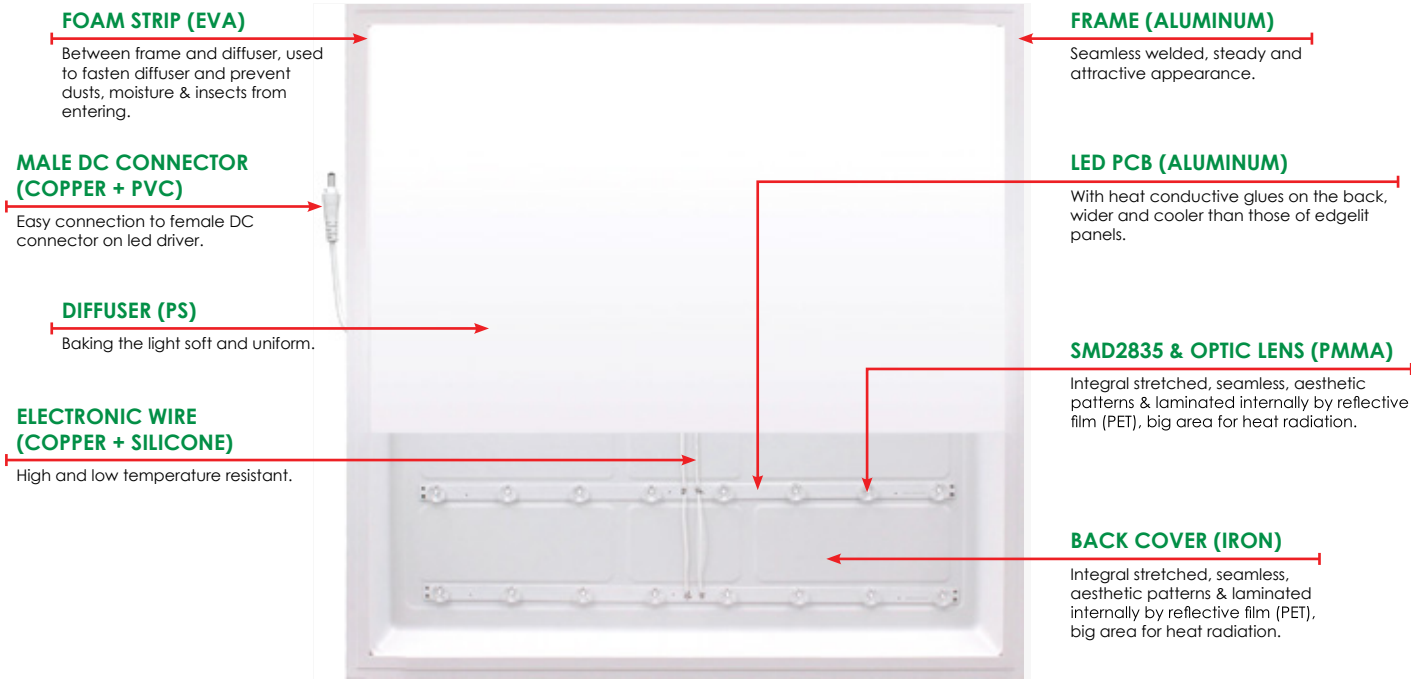
1 sets/Carton

Description

Upgrade your lighting with our 1195x595 60W LED Panel Light, featuring switchable colour temperatures (6500K, 4000K, 3000K) for versatile illumination. Enjoy high brightness, even light distribution, and energy efficiency in this pack of 2 LED panels.

Features

- **CCT Switchable Colours:** Choose from 3000K, 4000K, or 6500K with a simple switch on the driver, ensuring the perfect lighting for any setting.
- **Ultra Smooth Light Distribution:** Achieve even illumination with a CRI90 rating and a precise optical PMMA lensed diffuser, eliminating bright spots and dark areas.
- **Durable and Reliable:** No LGP inside, preventing yellowing issues common with conventional edge-lit LED panels. Simple structure with low failure rate ensures easy maintenance and repair.
- **Energy Efficient:** Save up to 90% on energy costs compared to traditional bulbs, with high light efficiency of up to 100 lumens per watt.
- **Flicker-Free and Instant Start:** External driver ensures flicker-free lighting, reducing eye fatigue and working pressure. Instant start, reaching full brightness within 0.5 seconds.



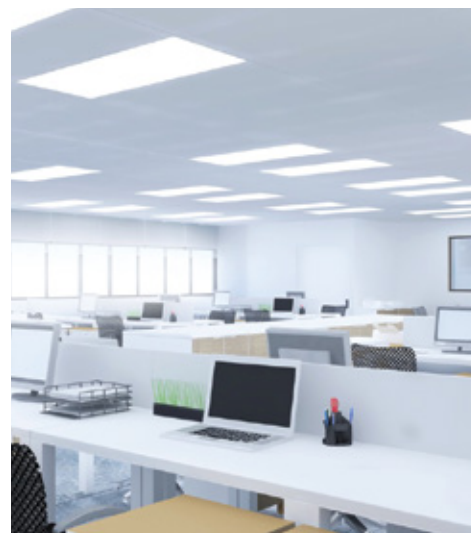
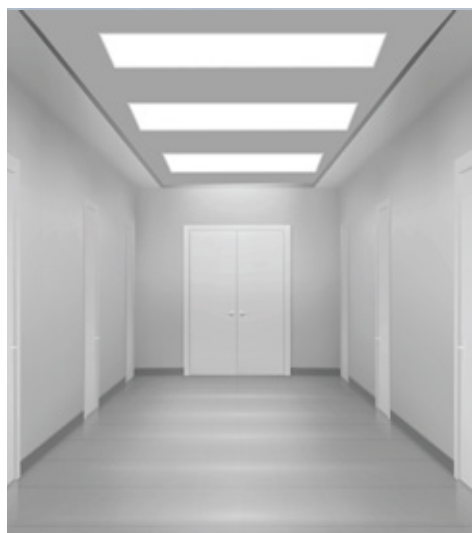
Technical Parameters

Rated Wattage	60W
Lumens	6000lm
SMD QTY (pcs)	64
SMD Type	SMD2835, 9.0V 110mA
Light Efficiency	Up to 100 lm per watt
Color Temperature	Switchable between 6500K, 4000K, 3000K
Input Voltage	220-240V
CRI	80
Beam Angle	> 120°
Power Factor	PF > 0.9
Starting Time	< 0.5 s
Warranty	2 years
Lifespan	20000Hrs
Operating temp.	-20~+45°C
Size	1195*595*30mm Back-lit

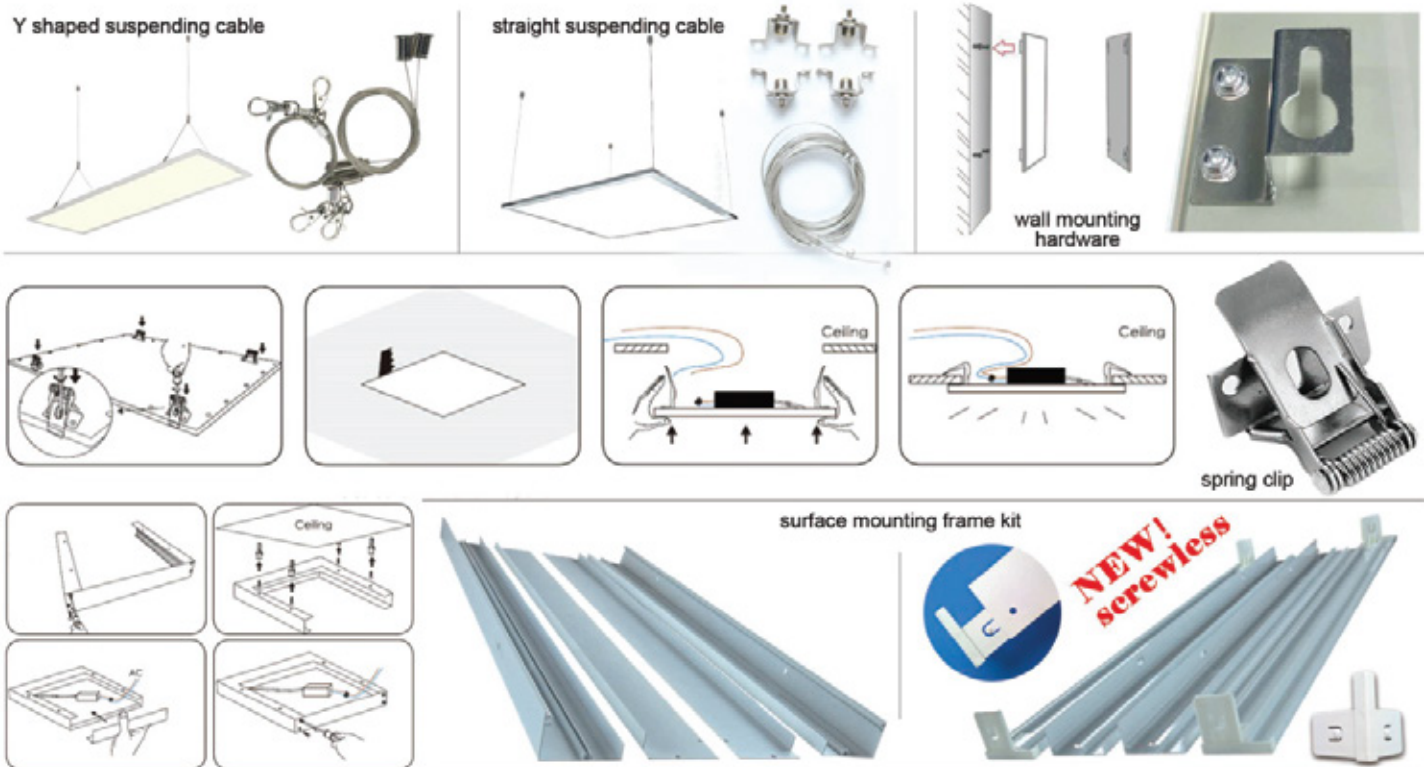






Box Contents:

No.	Item	Quantity
1.	1195x595 60W LED Panel Light	2 pcs
2.	External Driver	2 pcs
3.	Mounting Kit	2 sets
4.	User Manual	1 pc



Accessories (not included)



Accessories	SKU
Surface Frame	T417 
Suspended ceiling kits	T405 
Emergency Battery Pack	T412 
Microwave Sensor	T345 

Warning

- This product should be installed or maintained by trained electricians.
- Check integrity of the products when unpack the package and make sure there are no any damages, otherwise please all distributors for replacement.
- The distance between the light fixture and any flammable materials must be more than 20cm. The distance between the upper part of the installed light fixture and the ceiling must not be less than 2cm. The light fixture must not be installed into ceilings or walls that contain heat-insulating material.
- Please make sure to cut off power supply before installation, replacement or removal.
- Please read manual carefully and wire correctly.
- Do not remove the stickers on drivers or light fixtures.
- Never leave children unattended in the vicinity of the light fixtures and do not allow them to play with electrical devices.
- Never allow the fixture to come into contact with open flames or external heat sources, or UV rays.
- The products need special treatment of recycling after service time.

The parameters above are subject to change without prior notice.

Stuck? Confused?

Contact our Technical Support team on:

T: +44 (0)1291 446 105 E: support@ener-j.co.uk

Lines are open Mon - Fri (8am to 4pm)