

Gypsum LED Cove Light 45 Degree Corner Aluminum Profile

- White or Black Housing, 1 Meters

ENER-J®
Smart Home Living



SKU CODE:

T650 (White)

T690 (Black)

Short Description:

The **Gypsum LED Cove Light 45 Degree Corner Aluminum Profile** offers a versatile, sleek, and efficient solution for integrating LED lighting into your home or office. Available in elegant white and modern black finishes, this 1-meter profile accommodates LED strips for creating ambient lighting along walls, skirting boards, or under cabinets. Crafted from high-quality aluminum with a polycarbonate cover and end caps, it provides exceptional durability, heat dissipation, and long-lasting performance.

Key Features:

- **Elegant Design in White or Black:** Available in two versatile color options, white and black, this profile blends seamlessly with any décor, offering a stylish and modern lighting solution for both residential and commercial spaces.
- **Durable Aluminum Construction:** Built with a robust aluminum body, this profile ensures long-term durability and efficient heat dissipation, keeping your LED strips cool for optimal performance and longevity.

- ▶ **Clear Polycarbonate Cover & End Caps:** The polycarbonate (PC) cover and end caps provide additional protection for your LED strips, preventing dust, moisture, and physical damage while allowing light to diffuse evenly.
- ▶ **Perfect for Custom Lighting Solutions:** With a size of 1 meters, the Gypsum LED Cove Light 45 Degree Corner Aluminum Profile is ideal for custom lighting installations along skirting boards, walls, or under cabinetry. It's perfect for both ambient and task lighting applications.
- ▶ **Efficient Heat Management:** The aluminum body aids in preventing overheating by effectively dispersing heat from the LED strips, helping to prolong the lifespan and maintain energy efficiency.
- ▶ **Easy Installation:** Designed for quick and simple installation, the profile comes with all necessary components, including end caps and mounting clips, making it easy to set up in any space.

Technical Specifications:

SKU:	T650 (White) / T690 (Black)
Material:	Aluminum (Body), Polycarbonate (Cover & End Caps)
Voltage:	220~240V
Size (L x H x W):	1000 x 67.3 x 67.3 mm
Colour:	White / Black
Operating Temperature Range:	-30°C to +100°C
Heat Stability:	Up to 90°C
Manufacturing Tolerances:	±0.5 mm

Frequently Asked Questions (FAQs)

1. Can I cut the Gypsum LED Cove Light 45 Degree Corner Aluminum Profile to fit my space?

Yes, the profile can be easily cut to a shorter length using a saw or cutting tool. Ensure you measure the area accurately before cutting.

2. Are the LED strips included with the profile?

No, the Gypsum LED Cove Light 45 Degree Corner Aluminum Profile is designed to house LED strips that are sold separately. Ensure the strips you choose fit within the profile (up to 10mm wide).

3. What is the difference between the white and black versions?

The white and black options offer aesthetic flexibility to match different interior styles. Both versions have the same specifications and features, but the color choice allows for better integration into light or dark-themed spaces.

4. Is the profile suitable for outdoor use?

The Gypsum LED Cove Light 45 Degree Corner Aluminum Profile is designed for indoor use. For outdoor installations, we recommend using a profile specifically designed for exposure to the elements.

5. What type of LED strips work best with this profile?

This profile is compatible with most flexible LED strips that are up to 10mm wide. We recommend using high-quality LED strips designed for aluminum profiles to ensure optimal performance.

6. How do I install the Gypsum LED Cove Light Profile?

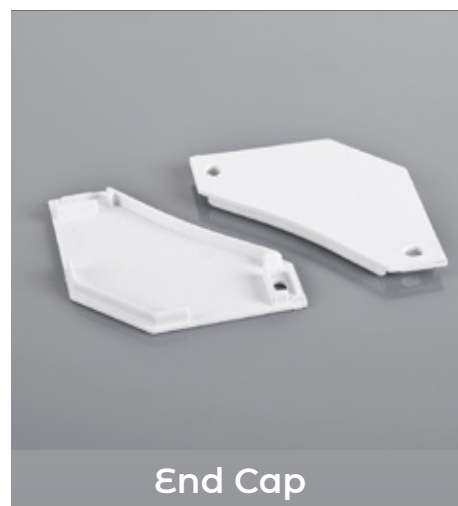
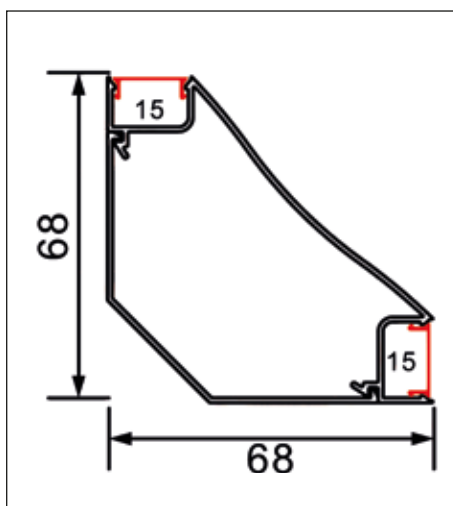
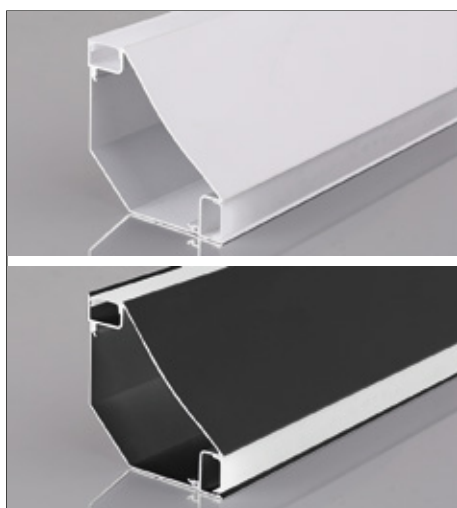
Installation is straightforward with the included mounting clips. Simply attach the clips to the wall or skirting board, place the profile in position, and insert your LED strip inside the profile. End caps provide a clean finish for the installation.

7. How well does the profile manage heat?

The aluminum body is designed to dissipate heat efficiently, which helps prevent your LED strips from overheating and ensures a longer lifespan for the lights.

8. Can I use this profile for under-cabinet lighting?

Yes, the Gypsum LED Cove Light Profile is perfect for under-cabinet lighting as well as other applications where space is limited but you want effective, aesthetic lighting.



Thank you for choosing ENER-J!

Customer satisfaction is our TOP priority, please let us know how you felt about your experience. Happy? We are so happy that you are pleased with our product. Feel free to express your newfound joy! Share your experience by writing a review.

Not Happy? If you are not fully satisfied with the item you received, have any problems like damages, or questions, please contact us. We typically respond within 24-48 hours.

Have a question? We're happy to help!

Contact us on:

T: +44 (0)1291 446 105 E: support@ener-j.co.uk

Lines are open Mon - Fri (8am to 4pm)