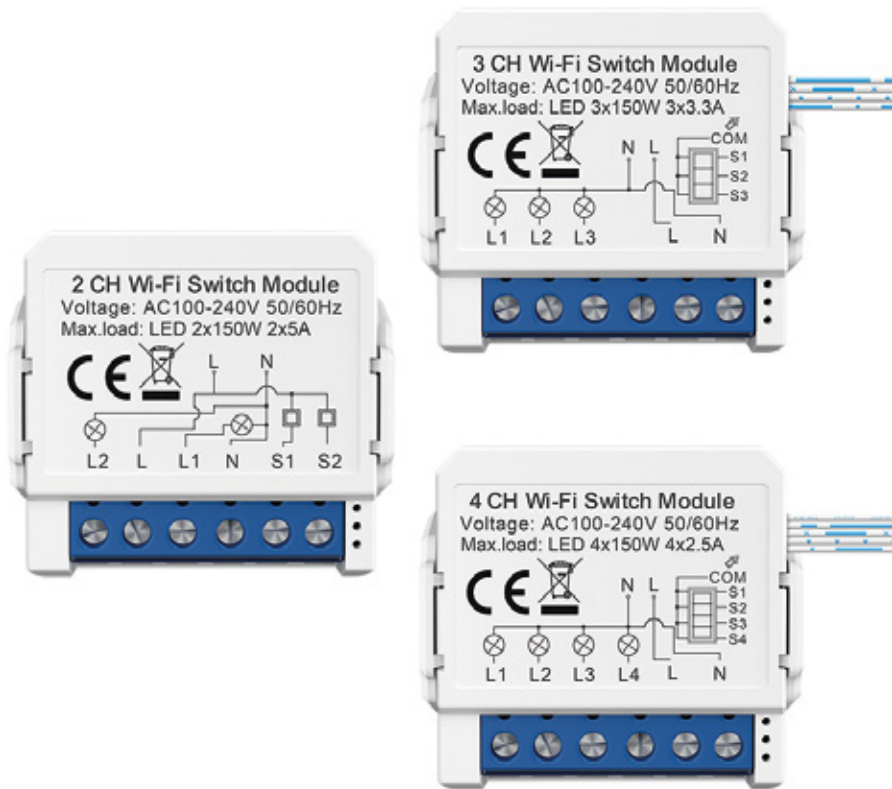


# ENER-J Smart WiFi Light Switch Module

Convert Any Existing Non-Dimmable Switch to Smart Control via App & Voice, Compatible with Alexa & Google Assistant

**ENER-J®**  
Smart Home Living



**SKU Code:** SHA8005  
SHA8006  
SHA8007

## Product Description:

Upgrade your home to a smart haven with the ENER-J Smart WiFi Switch Module. This ultra-compact module transforms your existing light switches into smart switches without replacing the physical setup. Control your lights remotely through the Smart Life or Tuya app and enjoy seamless voice control with Alexa or Google Assistant. Easy to install, versatile, and packed with advanced features, it's the perfect solution for modern smart homes.

## Key Features:

- **Compact Ultra-Mini Design:** At just 39x39x19 mm, it fits 98% of standard switch boxes.
- **App & Voice Control:** Effortlessly control your lights using the Smart Life/Tuya app or voice assistants like Alexa and Google Assistant.
- **Dual-Way Control:** Upgrades traditional two-way switches without rewiring.
- **Memory & Timer Functions:** Remembers the last state after power loss and supports timers, schedules, and countdowns for convenience.
- **Family Sharing & Group Control:** Share control with family members and group multiple switches for centralized control.
- **Interlinking & Scene Modes:** Create customized home scenarios like sleep mode, dinner mode, or back-home mode.

## Technical Specification:

Product Type	2 Gang, 3 Gang, 4 Gang Non-Dimmable
SKU	SHA8005 (2G), SHA8006 (3G), SHA8007 (4G)
Voltage	AC 100-240V, 50/60Hz
Max Load	LED 250W, 10A
Operation Frequency	2.412GHz-2.484GHz
Operating Temperature	-10°C to +40°C
Protocol	WiFi IEEE 802.11b/g/n
Operation Range	<100m
Dimensions	39x39x19 mm
IP Rating	IP20



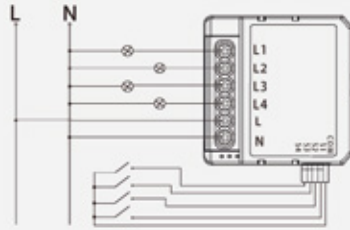
## What's in the Box?

- 1 x ENER-J Smart WiFi Switch Module
- User manual
- Installation Screws

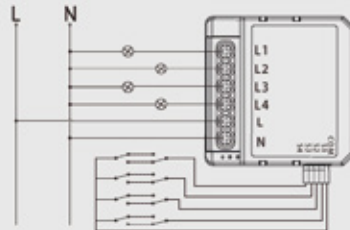


# Wiring Diagram

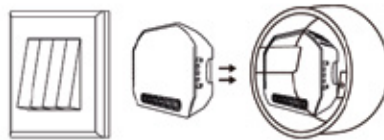
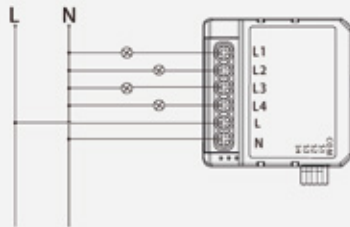
**4 Gang Single Control**



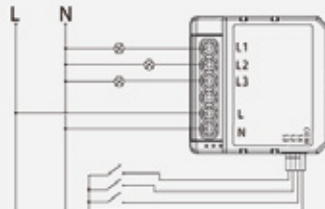
**4 Gang Dual Way Control**



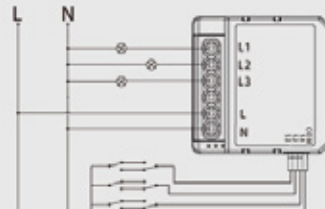
**Without Switch**



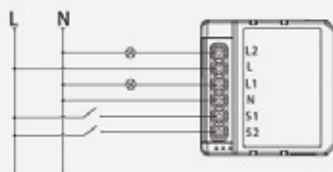
**3 Gang Single Control**



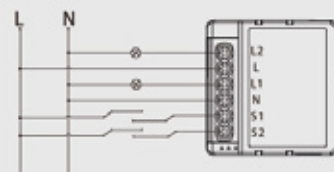
**3 Gang Dual Way Control**



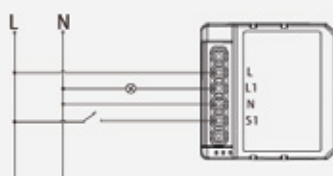
**2 Gang Single Control**



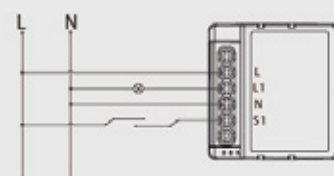
**2 Gang Dual Way Control**



**1 Gang Single Control**



**1 Gang Dual Way Control**



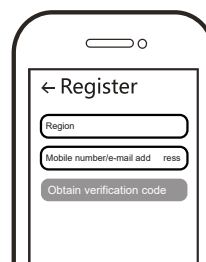
## Pairing Instruction



IOS APP / Android APP

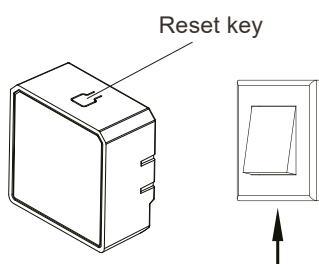
1

Scan the QR code to download Tuya Smart App, or you can also search keyword "Tuya Smart" and "Smart Life" at App Store or Googleplay to download App.



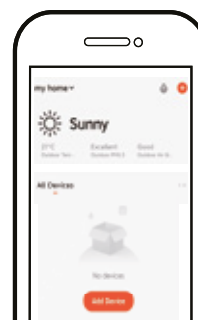
2

Log in or register your account with your mobile number or e-mail address. Type in the verification code sent to your mobile or mail box, then set your login password. Click "Create Family" to enter into the APP.



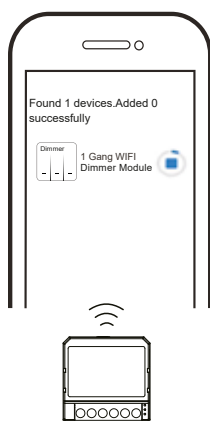
3

After the wiring of switch module is done, press the reset key for about 10 seconds or turn on/off the traditional switch for 5 times until the indicator light inside the module is flashing quickly for pairing.



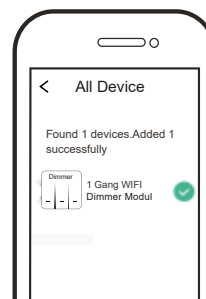
4

1. Support multi-protocol matching: WIFI/Bluetooth.
2. Turn on Bluetooth, Click "+", follow the on-screen instruction for pairing.



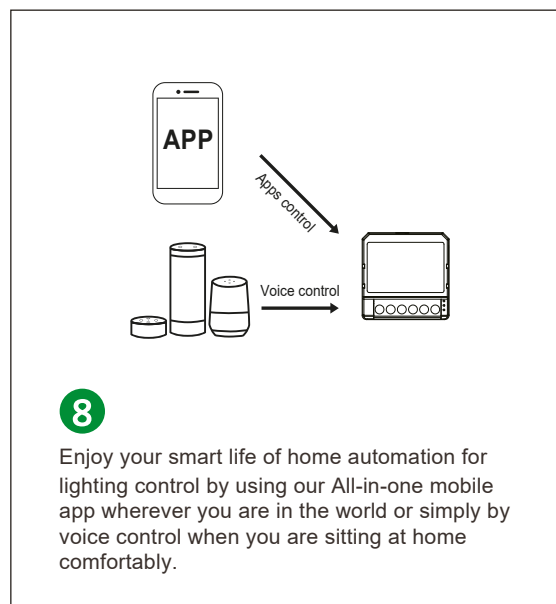
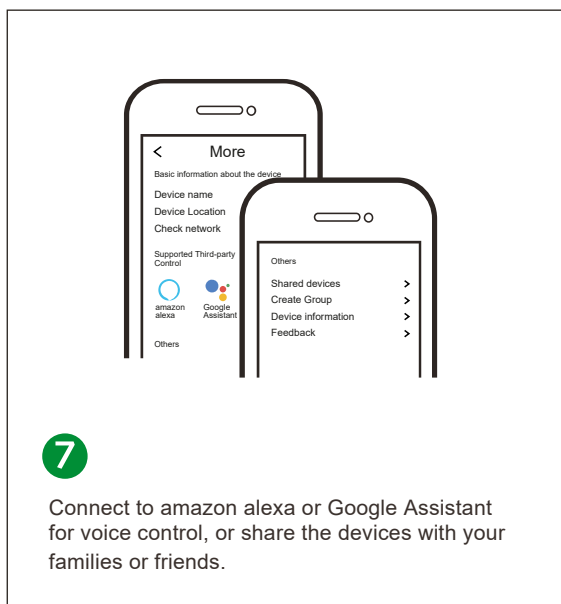
5

The connecting will take about 10-120 seconds to complete depending on your network condition.



6

Finally, you can control the device via your mobile phone.



## FAQ

**Q1: What should I do if I can't configure the switch module?**

- Please check whether device is powered on.
- Make sure your mobile and dimmer module are the same 2.4 Ghz WIFI network.
- Whether it's in good internet conditions.
- Make sure the password entered in App is correct.
- Make sure the wiring is correct.

**Q2: What device can be connected to this Wi-Fi switch module?**

Most of your household electrical appliances can be, such as lamps, laundry machine, coffe maker, etc.

**Q3: What happens if the WIFI goes off?**

You can still control the device connected the switch module with your traditional switch and once WIFI is active again the device connected to module will connect automatically to your WIFI network.

**Q4: What should I do if I change the WIFI network or change the password?**

You have to re-connect our Wi-Fi switch module to the new Wi-Fi network accordingly as per the App User Manual.

**Q5: How do I reset the device?**

Power on/off device for 5 times until the indicator light flash.

## APP Remote Control



## Timing/Count Down/Schedule



---

### Thank you for choosing ENER-J!

Customer satisfaction is our TOP priority, please let us know how you felt about your experience. Happy? We are so happy that you are pleased with our product. Feel free to express your newfound joy! Share your experience by writing a review.

Not Happy? If you are not fully satisfied with the item you received, have any problems like damages, or questions, please contact us. We typically respond within 24-48 hours.

**Have a question? We're happy to help!**

Contact us on:

T: +44 (0)1291 446 105 E: [support@ener-j.co.uk](mailto:support@ener-j.co.uk)

Lines are open Mon - Fri (8am to 4pm)